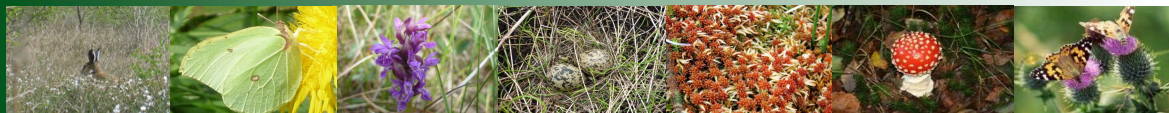


# Biodiversity Action Plan Review 2012

## Rehabilitation and Communication



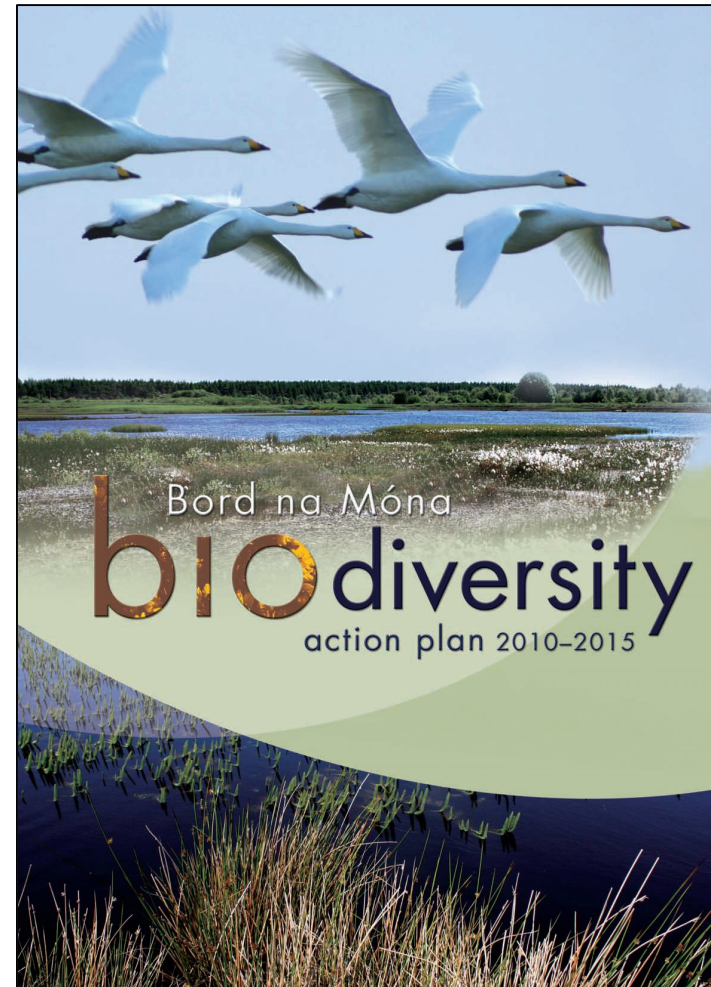
David Fallon

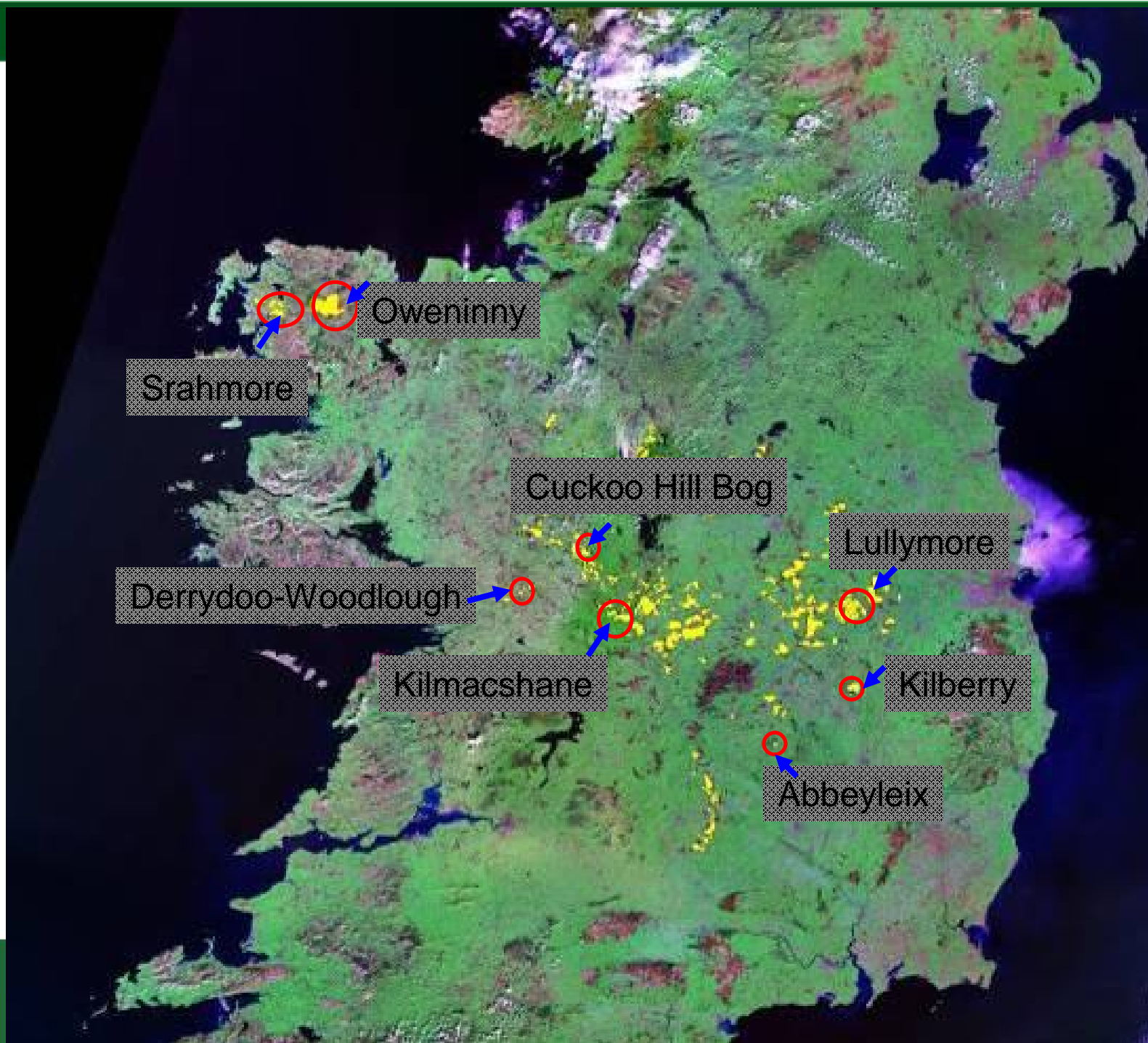


**BORD NA MÓNA** 

# Practical Rehabilitation and Communications

- Bog restoration programme
- Rehabilitation programme
- Kilberry *Sphagnum* trials
- Srahmore *Sphagnum* trials
- Rehabilitation trials
- Communications







# Bord na Móna Bog Restoration Programme

- Ditched bogs early 1980s
- Biodiversity survey
- Areas designated as BnM biodiversity areas in 2009
- Ongoing project (757ha committed to date)

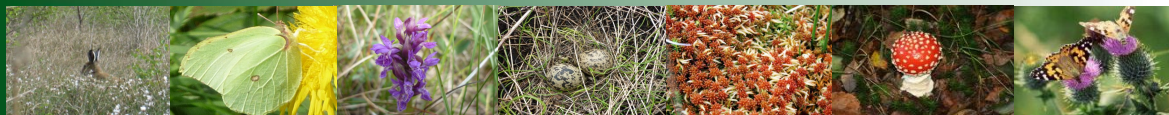




# Bord na Móna Bog Restoration Programme

## Work programme

- Level survey of bog
- Construction of dams
- Ongoing monitoring of the site





# Abbeyleix Bog Restoration



- Abbeyleix Bog 190ha
- Restoration work completed 2009 (3,500 dams!)
  - April 2012 – official handover to local community



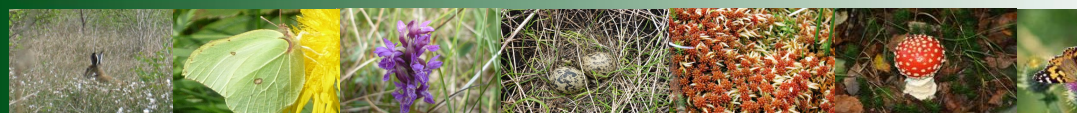
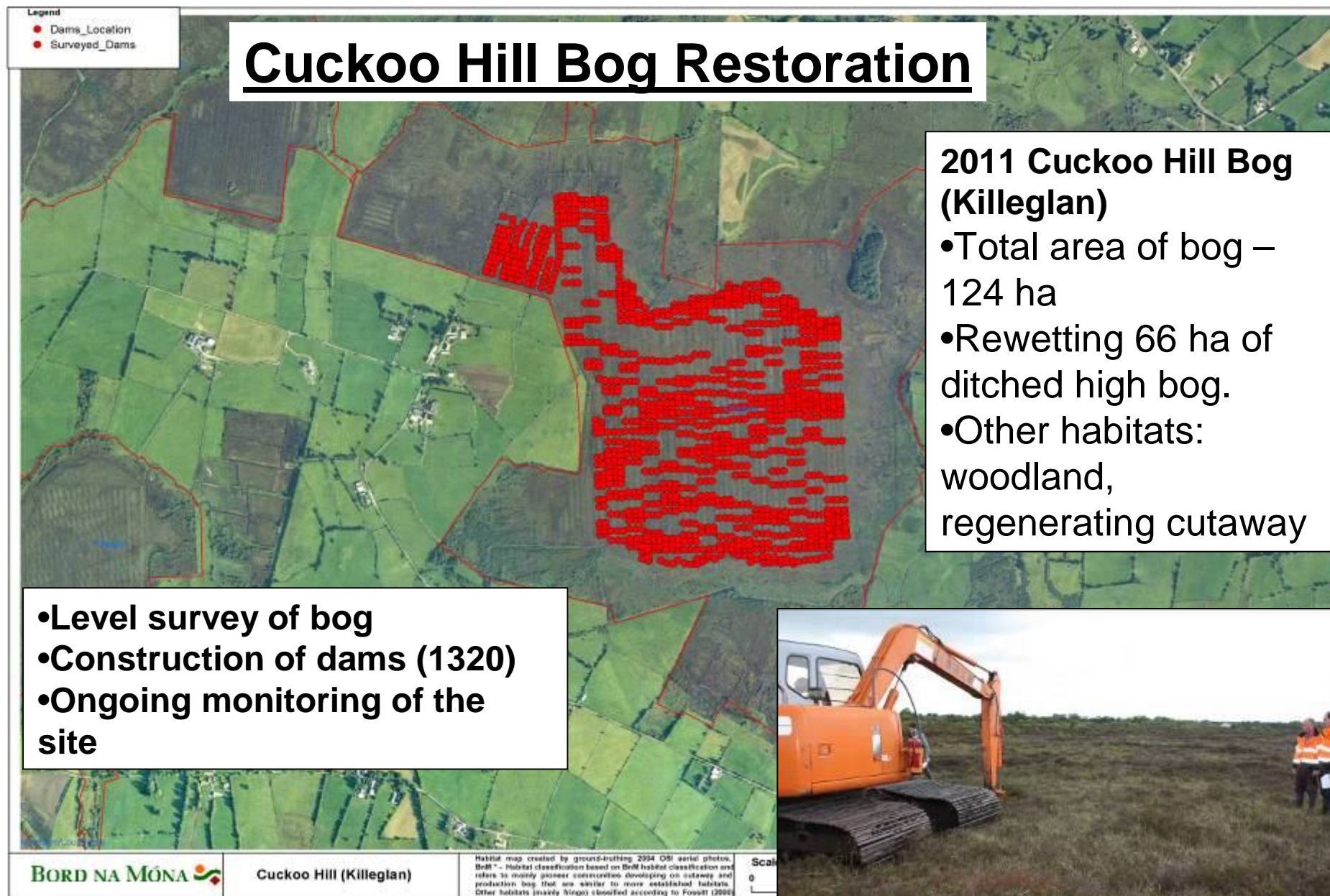
BORD NA MÓNA

ITM

Abbeyleix Bog









## Derrydoo Woodlough - 443ha

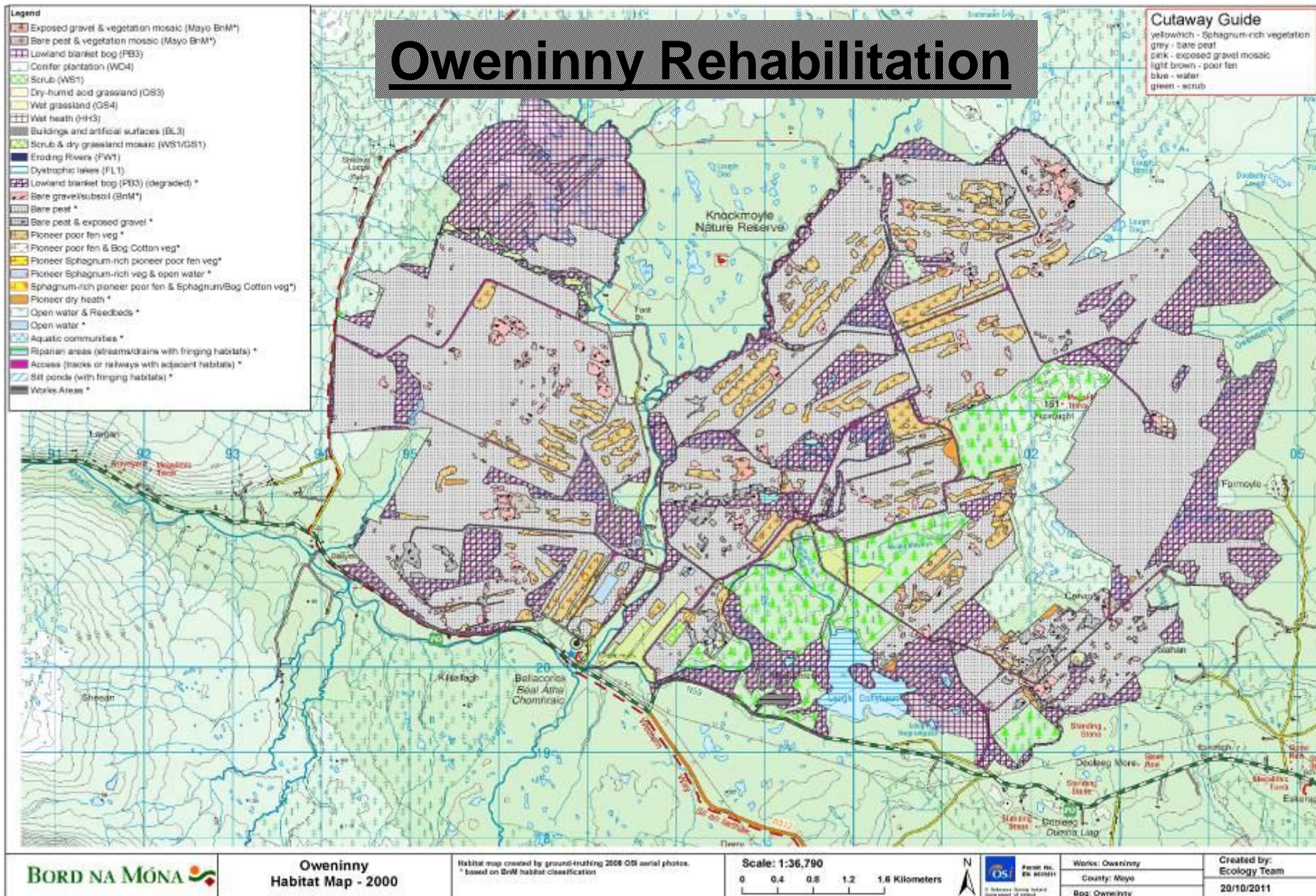
- Phase 1 Moyarwood Bog
- Restoration work commencement in 2012
- 80% complete – 134ha



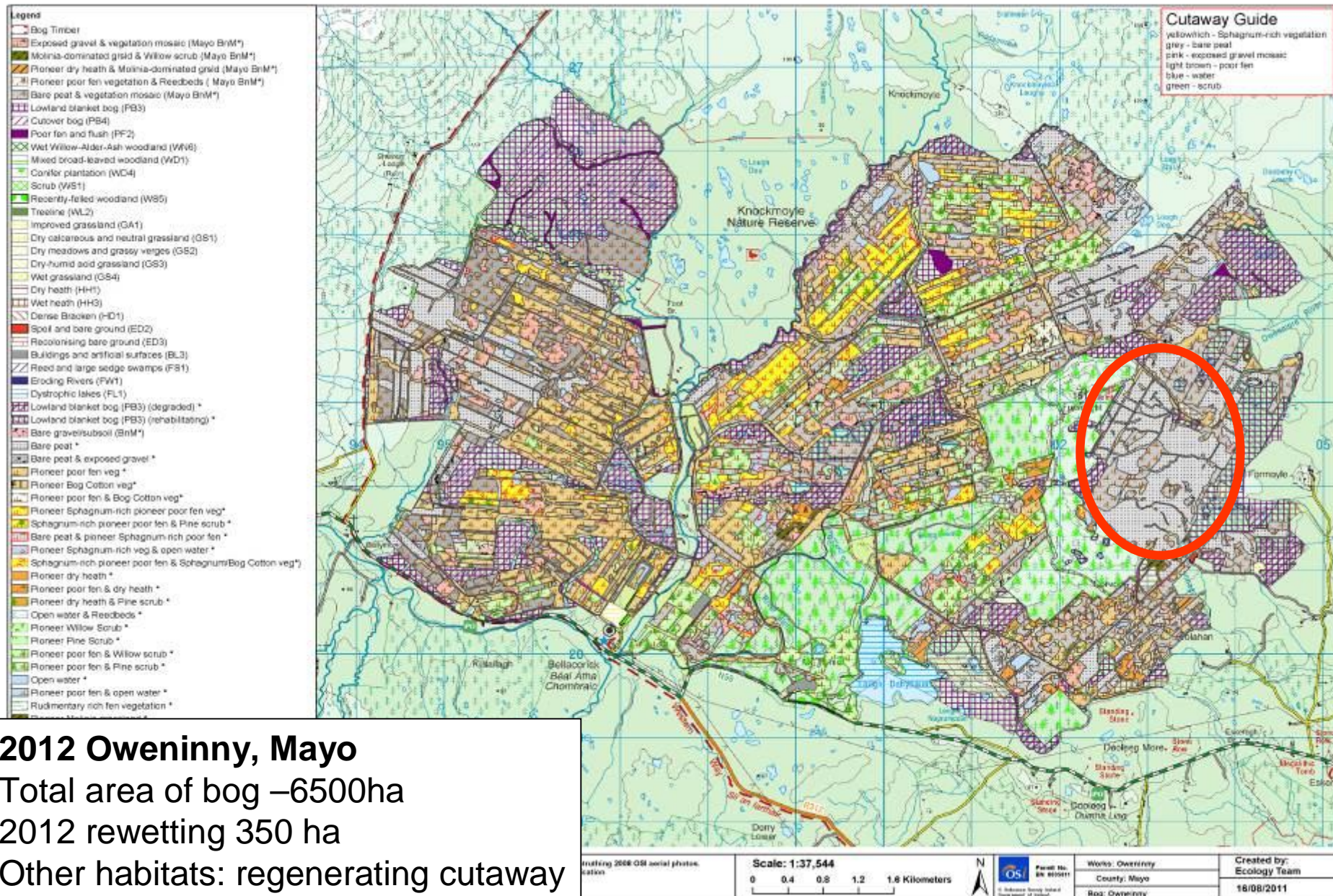
|              |  |                    |
|--------------|--|--------------------|
| 5 Kilometers | N<br>OS<br>Permit No.<br>DN 3035810<br>© Ordnance Survey Ireland<br>Surveyors of Ireland | Works: Derryfadda  |
|              | County:  | Galway             |
|              | Bog:   | Derrydoo Woodlough |



# Oweninny Rehabilitation













# Kilberry *Sphagnum* Trial

*Sphagnum cuspidatum*  
*Sphagnum magellanicum*  
*Sphagnum subnitenens*  
*Sphagnum capillifolium*  
*Sphagnum papillosum*

Joint project with the  
Innovation and Ecology  
sections of BnM





U9

*S. papillosum*



BORD NA MONA  
PLC





# Srahmore *Sphagnum* Trial

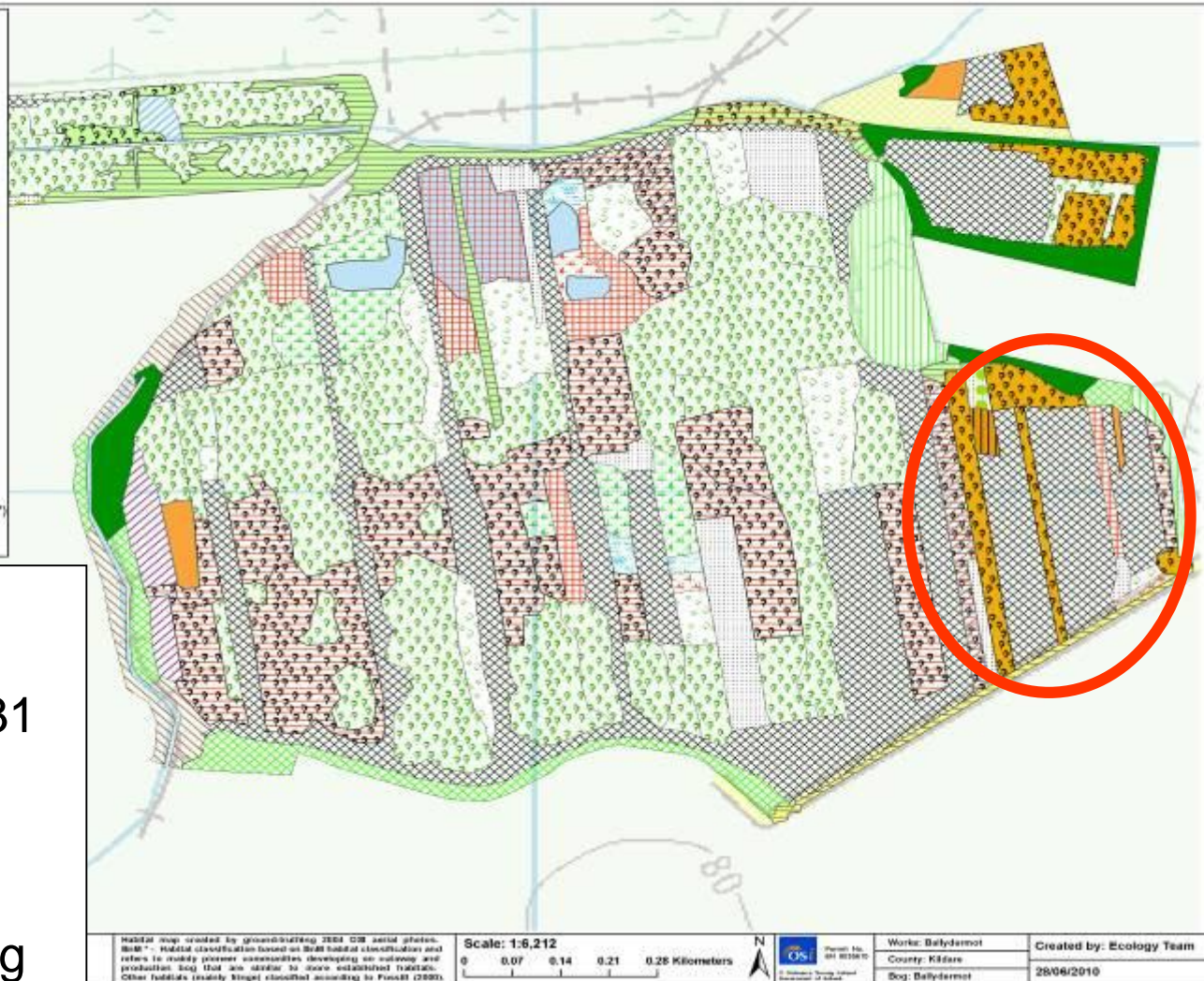




# Lullymore Rehabilitation

Legend

|           |   |
|-----------|---|
| [Pattern] | Cutover Bog (PB4)   |
| [Pattern] | Rich fen and flush (PF1)                                      |
| [Pattern] | Bog woodland (WN7)  |
| [Pattern] | Mixed broad-leaved/conifer woodland (WD2)                     |
| [Pattern] | Scrub (WS1)   |
| [Pattern] | Wet grassland (GS4)   |
| [Pattern] | Dense Bracken (HD1)   |
| [Pattern] | Bare peat (BnM*)  |
| [Pattern] | Bare peat & Poor fen mosaic (BnM*)                            |
| [Pattern] | Bare peat and dry grassland mosaic (BnM*)                     |
| [Pattern] | Pioneer Poor fen community (BnM*)                             |
| [Pattern] | Rudimentary Rich fen community (BnM*)                         |
| [Pattern] | Pioneer Poor fen community mosaic (BnM*)                      |
| [Pattern] | Reedbeds (BnM*)   |
| [Pattern] | Open water (BnM*)   |
| [Pattern] | Emergent Birch scrub (pioneer) (BnM*)                         |
| [Pattern] | Birch scrub (BnM*)  |
| [Pattern] | Birch scrub & Poor fen mosaic (BnM*)                          |
| [Pattern] | Birch scrub & dry grassland mosaic (BnM*)                     |
| [Pattern] | Birch scrub, dry grassland & poor fen mosaic (BnM*)           |
| [Pattern] | Bare peat, poor fen & emergent Birch scrub                    |
| [Pattern] | Open water & pioneer Poor fen mosaic (BnM*)                   |
| [Pattern] | Dry heath (BnM*)  |
| [Pattern] | Dry heath and Birch scrub mosaic (BnM*)                       |
| [Pattern] | Dry heath, Poor fen & Birch scrub mosaic (BnM*)               |
| [Pattern] | Dry grassland (BnM*)  |
| [Pattern] | Wet grassland (BnM*)  |
| [Pattern] | Riparian areas (streams/drains with fringing habitats) (BnM*) |
| [Pattern] | Access (tracks or railways with adjacent habitats) (BnM*)     |
| [Pattern] | Silt ponds (with fringing habitats) (BnM*)                    |



## 2012 Lullymore, Co. Kildare.

- Total area of bog – 131 ha
- Rehab area 10 ha.
- Other habitats: woodland, regenerating cutaway









# Other rehab projects



- Kilmacshane crop trials
- Blackwater reedbed trials
- Bunahinly re-wetting





## DEVELOPING HABITAT MANAGEMENT TECHNIQUES TO ENHANCE THE VALUE OF BORD NA MÓNA CUTAWAY RAISED BOGS IN IRELAND FOR BREEDING WADERS



BY



**Mark McCorry (Bord na Móna) (presenting author)**

**Alex Copland (Birdwatch Ireland), Tom Egan (Bord na Móna), David  
Fallon (Bord na Móna) and Catherine Farrell (Bord na Móna)**



Birdwatch Ireland are Irish partners to Birdlife International



**BORD NA MÓNA**



## Kilmacshane reed-bed trial

- Collection of Common Reed and Reed-mace seed
- Site preparation 1 ha
- Seed sowing
- Monitoring





# COMMUNICATIONS!!!

## Community Group Projects Consultation









## Raising Awareness

- |   |  |
|---|--|
| <ul style="list-style-type: none"><li>• <b>External</b></li><li>• Schools</li><li>• IT Sligo, University College Dublin and NUI Galway</li><li>• International Peat Congress, Stockholm (9 papers)</li><li>• International Union Conservation of Nature (IUCN) Bangor, Wales</li><li>• Irish Peat Society</li></ul> | <ul style="list-style-type: none"><li>• Intergovernmental Panel on Climate Change (IPCC)</li><li>• <b>Internal</b></li><li>• Feedstock operations units</li><li>• Business units</li></ul> |
|---|--|







## Lough Boora Parklands

Plants 334

Mammals 23

Birds 90

Butterflies/Moths 46

Others 447



# BioBlitz 2012





**Thank You**





# Agenda

- 9.30am Catherine Farrell Overall update
- 10.00am Mark McCorry Ecology survey; Rehabilitation planning
- 10.30am David Fallon Rehabilitation and communications
- 11.00am Coffee
- 11.30am Liam Lysaght National Biodiversity Data Centre
- 12.00 Alan Lauder BirdWatch Ireland
- 12.30pm Questions and Answers
- 1.00pm Lunch
- 1.45pm Tom Egan Lough Boora Parklands – an introduction
- 2.00pm A tour of the Lough Boora Parklands

