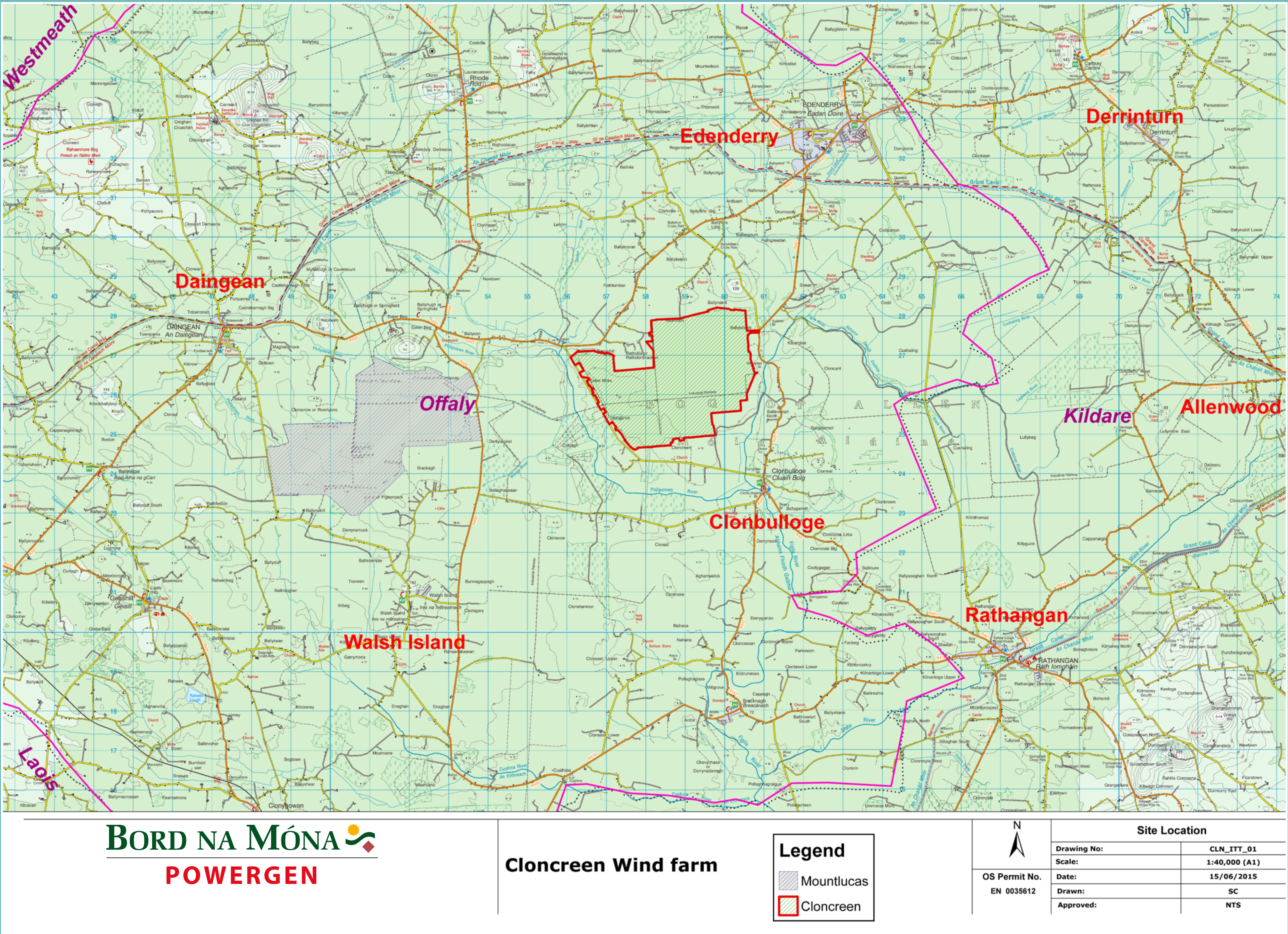


The proposed Cloncreen Wind Farm will be located to the north west of Clonbullogue, south of Ballyfore and south west of Edenderry.

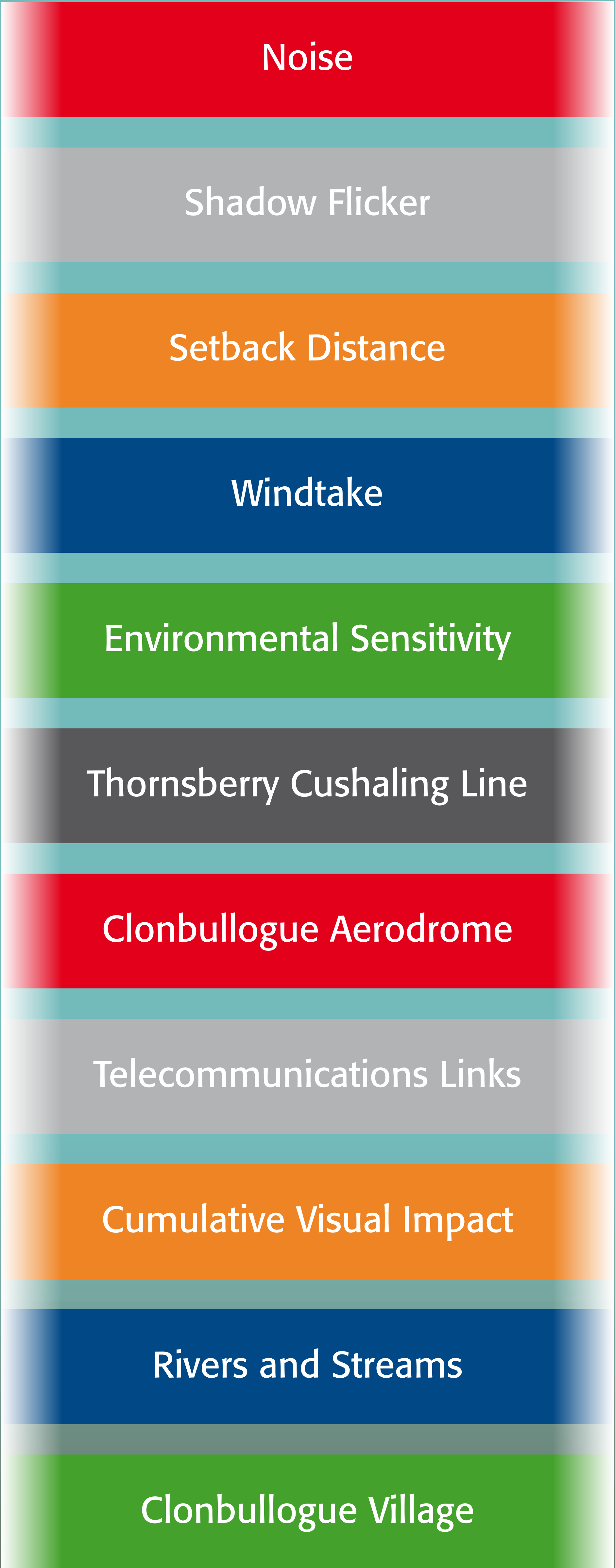


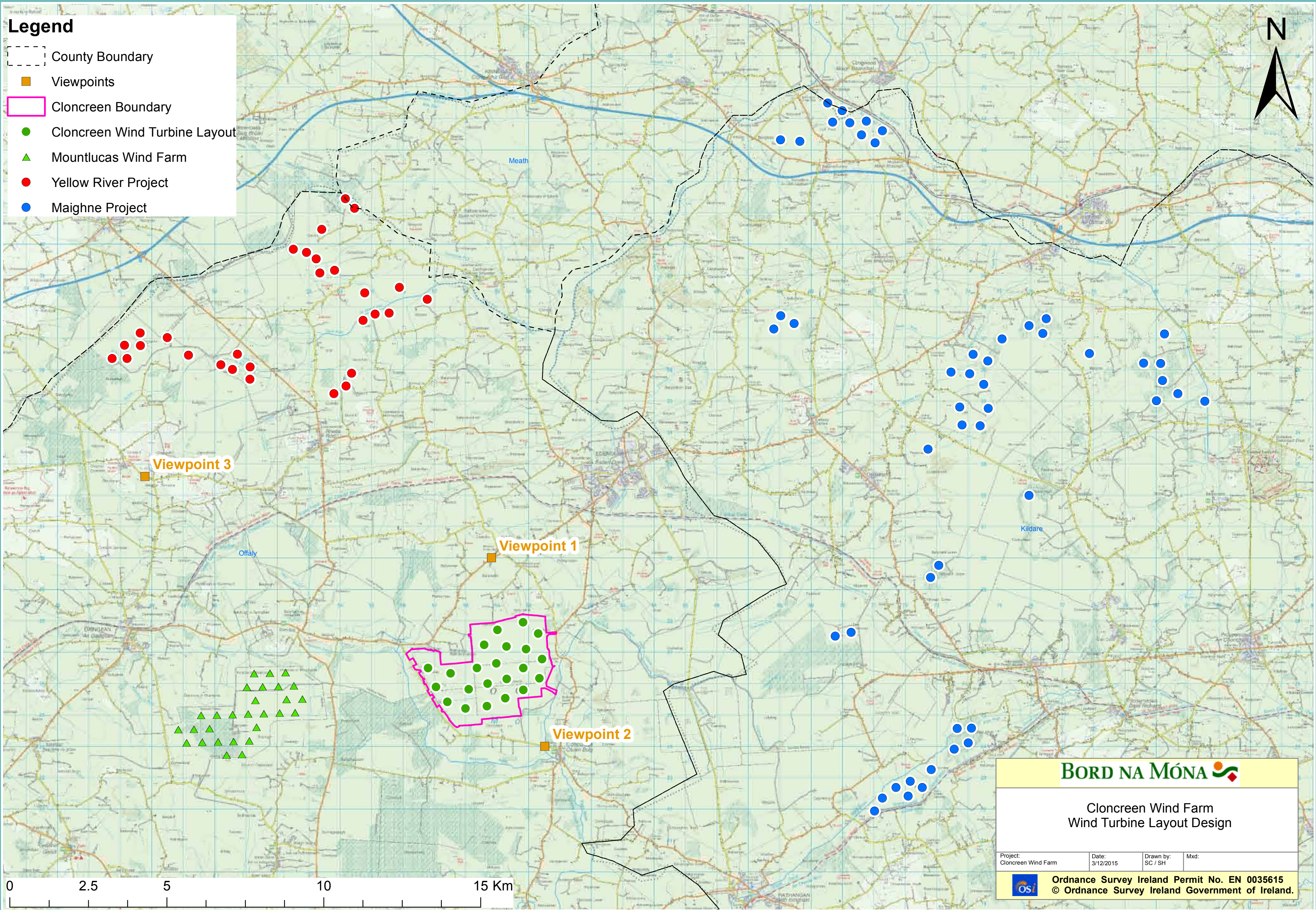
The proposed layout for the wind farm is for a total of 22 turbines. The proposed maximum height of the turbines will be 170m.

In designing a layout for the proposed Cloncreen Wind Farm development there are a number of criteria that must be considered.

The main criteria considered include:

- Setback distance: The minimum distance to the nearest house from a turbine based on the proposed layout is in excess of 700m.
- Noise: The layout has been designed to meet the proposed 40dB (A) noise limit value.
- Clonbullogue Village: In accordance with the Offaly County Development Plan 2014 - 2020 the nearest turbine will be greater than 2km from the village core.
- Clonbullogue Aerodrome: Applying international best practice and the relevant standards regarding the specific activities at Clonbullogue Aerodrome a setback distance of 2.7km from the centre of the runway has been applied.





Why Does Bord na Móna want to Build More Wind Farms?

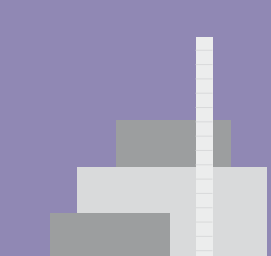
Ireland needs to move away from the use of fossil fuels, to de-carbonise the production of our electricity and reduce the impact of climate change.

Wind farms can also assist in the offset of carbon emissions arising from other sectors, such as agriculture.

The proposed project will contribute to both Ireland's and the European Union's renewable energy targets.

The project will contribute to increasing the security of energy supply in Ireland and facilitate a higher level of energy generation self-sufficiency.

Bord na Móna has a strong track record of siting, designing and delivering wind farms within its cutaway peatlands, such as Bellacorick, Bruckana and Mountlucas Wind Farms.



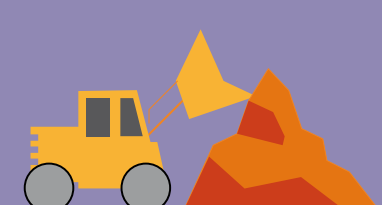
Powergen
Peaking



Powergen
Condensing



Powergen
Wind



Powergen
Biomass / Peat

**Harvesting the wind,
securing the future**

Noise

Bord na Móna will ensure that setback distances from residential dwellings will be in line with the new, revised guidelines from the Department of the Environment, and will be sufficient to meet all noise criteria.

Shadow Flicker

Bord na Móna will ensure that there are no shadow flicker impacts from Cloncreen Wind Farm.

Health

There is no evidence that wind turbines have adverse affects on the general health of residents in the vicinity of wind farms.

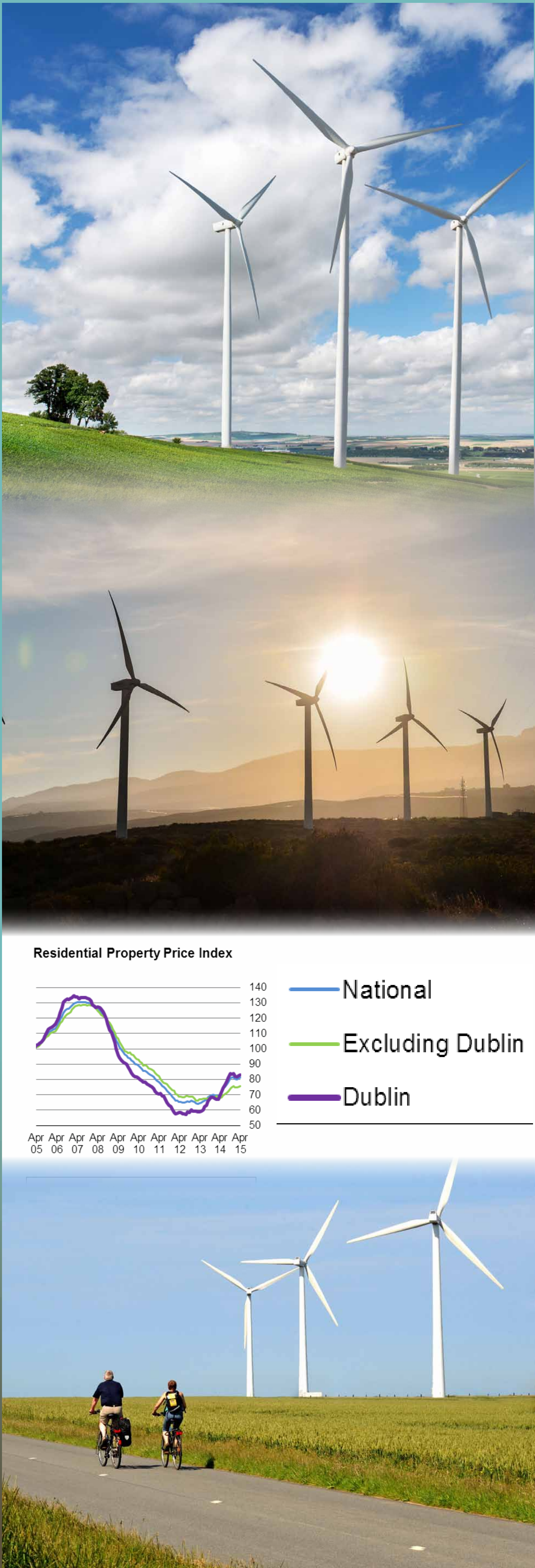
Property Values

The impact of wind farms on property prices has been the subject of many peer reviewed studies internationally, none of which show any sustained negative impact on property prices.

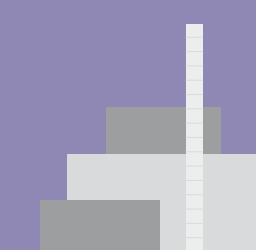
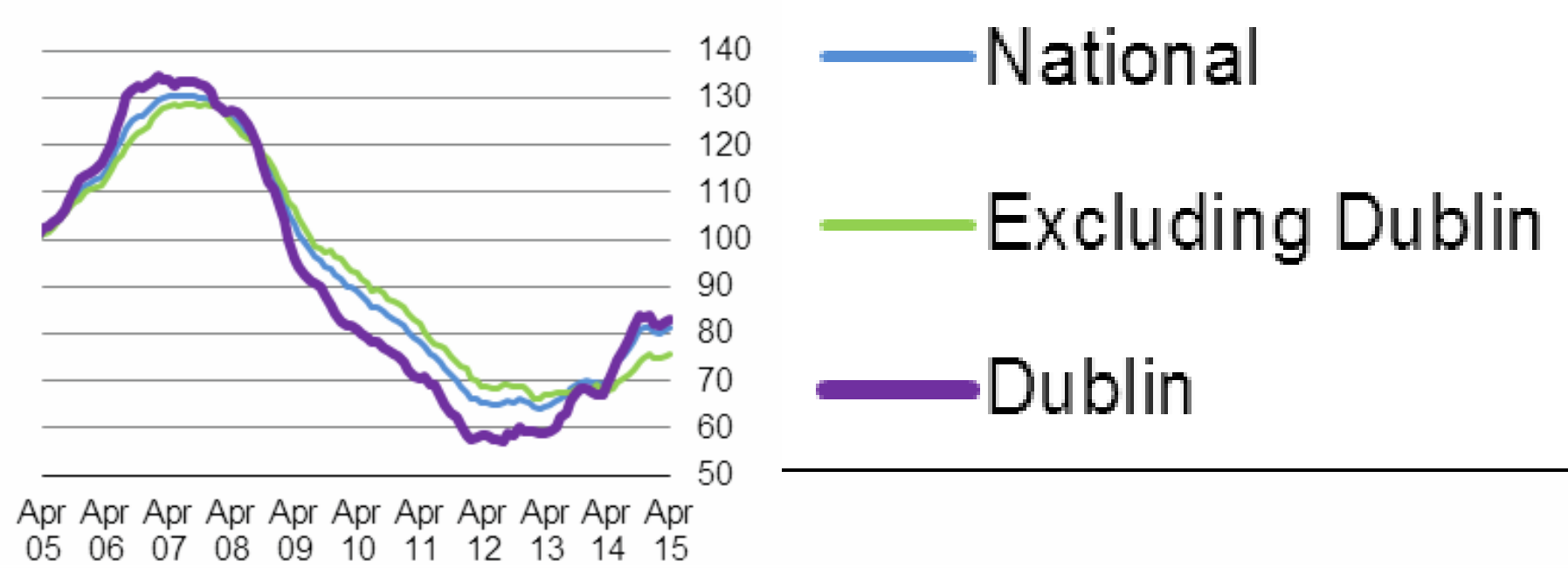
Visual Impact

In order to reduce the visual impact, a number of mitigating measures can be used:

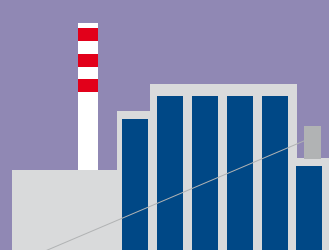
- Use of matt, non-reflective finishes.
- Placing connecting cables underground.
- Use of colour harmony and screening of substations.



Residential Property Price Index



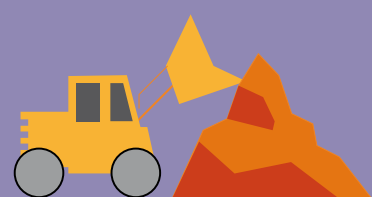
Powergen Peaking



Powergen Condensing



Powergen Wind



Powergen Biomass / Peat

Harvesting the wind,
securing the future





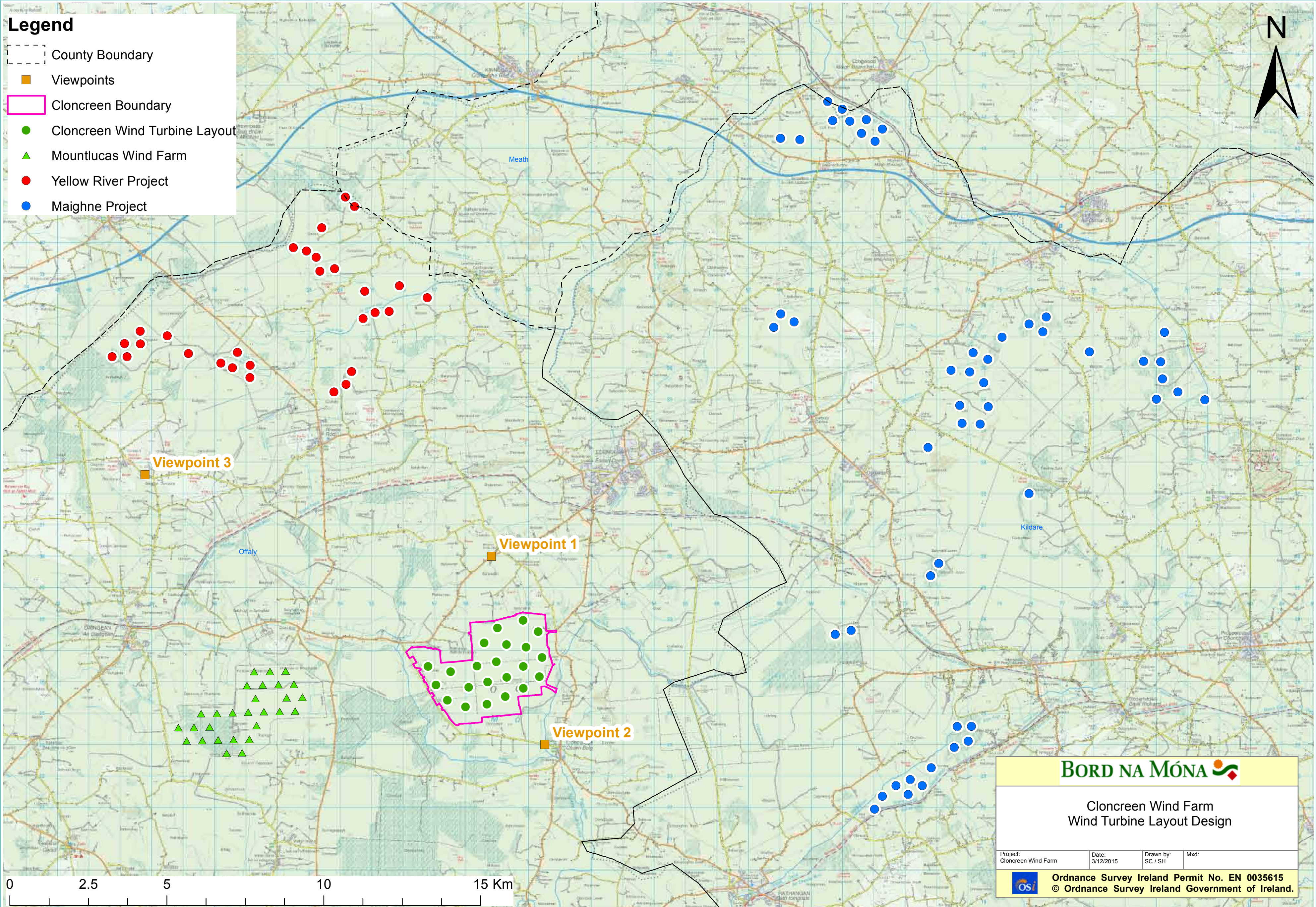
Viewpoint 1.



Viewpoint 2.



Viewpoint 3.



Public Engagement Ballyfore,
Clonbullogue and Edenderry:

Engagement
tools used in July

ADVERTS

3 papers

2 weeks

Posters
in
local
shops

Corporate
Website

feedback
sheets
completed

22

Number of public
clinic hours

24

Number of
emails received

9

Number of
phone calls

Key Topics

- Engagement Forum
- Property Valuation
- Visual Impact
- Employment
- House to House calls
- Tourism
- Wind as an Energy Source



250+

House to House calls

60%

At home

Key Additional Concerns

- Lack of transparency in the process (need for more communication)
- Access points to the proposed development
- Health
- Amenities on the wind farm (post construction)
- Access to turf plots
- Benefits for the locals

October:

120

page views

101

unique views



The proposed Cloncreen Wind Farm will give rise to a range of benefits at different levels:

At a National Level, the new development will contribute to the generation capacity required to meet Ireland's commitment to increasing its renewable energy sources in the post-2020 period and in particular the production of renewable electricity. During operation the farm will replace the need to generate the equivalent amount of electricity from fossil fuels, and it will therefore help to reduce total national greenhouse gas emissions. In doing so, it will reduce our dependence on external energy sources and help to improve our energy security of supply.

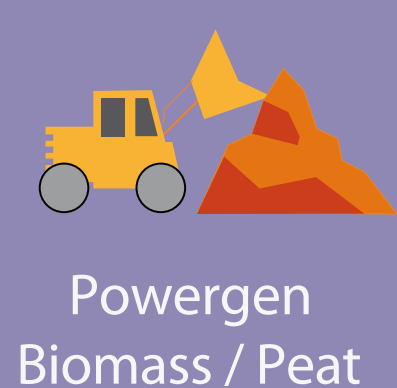
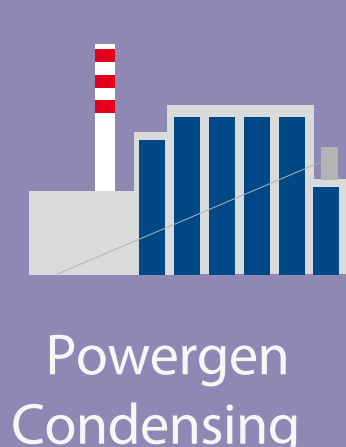
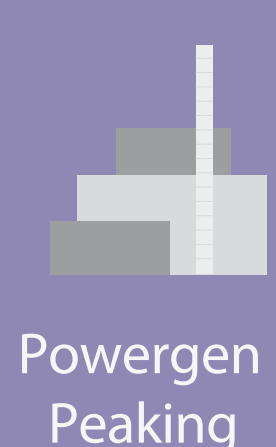
At a Regional Level, the new development will help to supply the rising demand for electricity, resulting from renewed economic growth in the Midlands region. During construction additional employment will be created in the region through the supply of services and materials to the wind farm. In combination with other potential Bord na Móna enterprises such as solar energy, it will help to secure the company's future as a sustainable energy supplier.

At a Local Level, it will ensure the continuity of enterprise and employment on the Cloncreen site well beyond the peat harvesting phase. At peak construction it is estimated that between 100 to 120 people will be employed on the site. Once in operation the wind farm will support 6 – 8 long term, high quality technical jobs in operation and maintenance. Rates paid by the wind farm to Offaly County Council will support the provision of local services. In addition, a range of other benefits associated with the development of large-scale projects will be provided to the community.



Resurfaced Main Street in Daingean.

Supplying concrete beams for a new bridge at Mount Lucas.



**Harvesting the wind,
securing the future**

The Cloncreen Community Engagement Forum is an additional communications channel that enables Bord na Móna to engage with interested groups and communities in the vicinity of the proposed new development. The Forum has an Independent Chair: Seamus Boland - Irish Rural Link. The Forum will meet to ensure that community concerns, ideas, views and opinions on the proposed wind farm are raised and discussed with Bord na Móna.

There are 35 voluntary members on the Forum representing the areas of: Ballinowlart North, Ballinrath, Ballyburley, Ballycon, Ballykilleen, Clonbullogue, Esker, Mount Lucas, Rathlumber, Rathvilla, Rhode, Scrubb and Walsh Island.

Key concerns and issues raised during public engagement are discussed at the Forum as well as three potential types of community benefits:

- Community Gain Scheme
- Near Neighbour Scheme
- Community Ownership Scheme

The quarterly “Mountlucas Wind Farm Newsletter” will provide updates on the Forum and topics discussed. Alternatively, please contact Bord na Móna or your local Forum Representative.

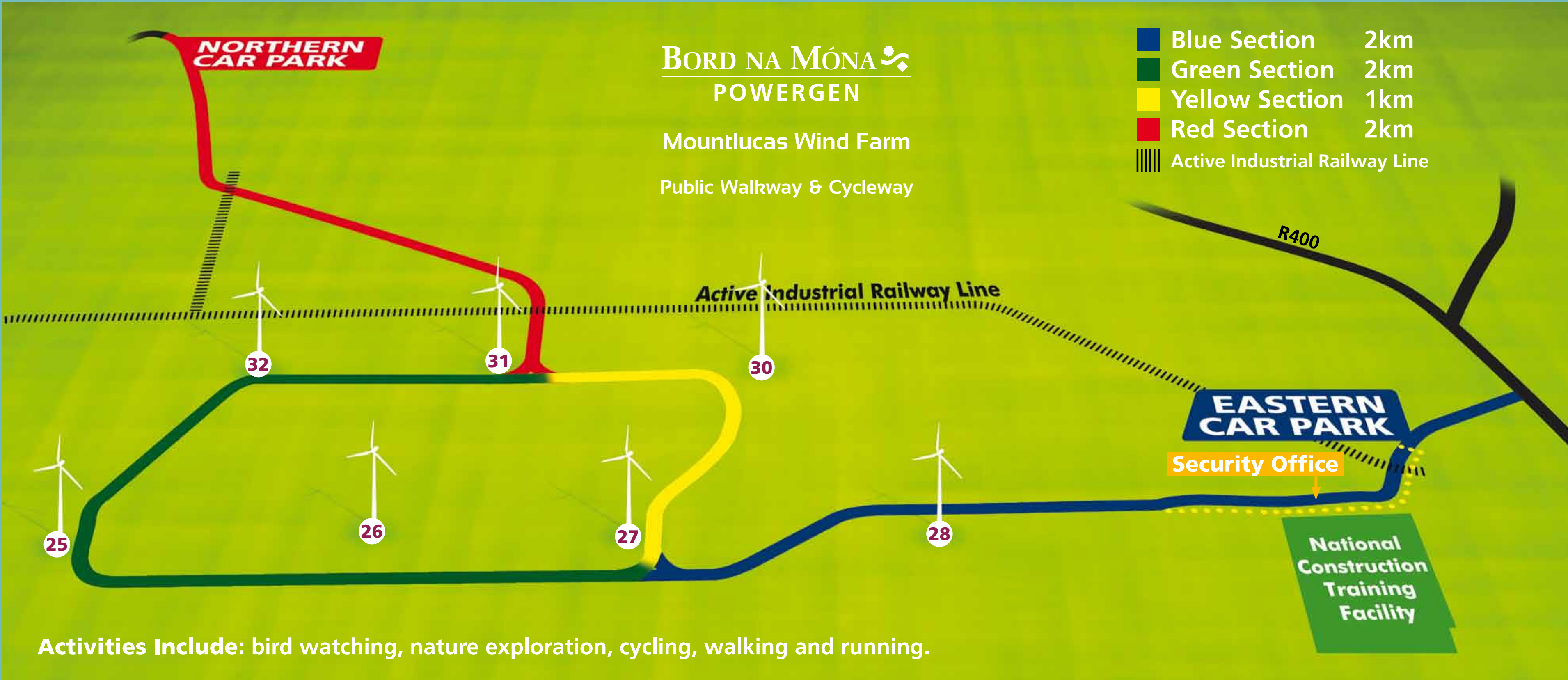


Mountlucas Community Gain Scheme Annual Awards

7 km Public Walkway - Cycleway

Mountlucas Wind Farm has recently completed the development of a 7 km walkway - cycleway around the wind farm. It is generally accessible all year round – free of charge with onsite parking facilities at both the Northern and Eastern access points.

This amenity is for walking, running and cycling. You might spot rare species at the wind farm such as the Marsh Fritillary Butterfly, the Dingy Skipper Butterfly and the Red Data Book–listed Round Leaved Wintergreen.



Organised Tours

Mountlucas Wind Farm also offers free guided tours of the site. This year we have welcomed over 3,000 people to the wind farm on pre booked visits. The guided tour lasts approximately 2 hours and covers renewable energy, wind farm construction, biodiversity and archeology. Facilities for tours include: car & coach parking, 7 km walkway-cycleway and toilet facilities. If your group, club or school would like to book a tour please contact Mountlucas Wind Farm on: 087 1175756 to arrange a visit.



- 2015** Public Engagement events.
Environmental Impact Study/Appropriate Assessment.
Turbine Layout Finalisation.
Renewable Electricity Policy and Development Framework and SEA publication.
Energy White Paper Publication.
- 2016** Completion and Submission of Planning application to An Bord Pleanála.
Oral Hearing (possible).
Finalisation of new Renewable support scheme.
- 2017** Planning Decision.

Bord na Móna Engagement Process

1st Public Consultation July 2015 – pre-planning consultation sessions.

2nd Public Consultation December 2015 – pre-planning public consultation sessions.

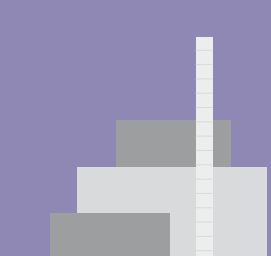
Ongoing Feedback/engagement opportunities through email/Community Engagement Forum/Community Liaison/Site visits to Mountlucas Wind Farm.

How to Contact Us:

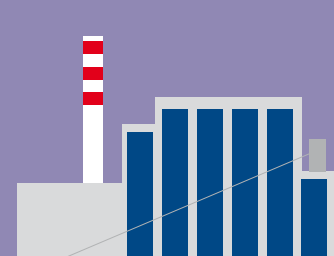
The information leaflet is available to download from the Bord na Mona website:
www.bordnamona.ie

E-mail: cloncreenwindfarm@bnm.ie

Phone: 045-439800



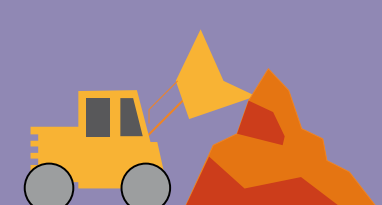
Powergen
Peaking



Powergen
Condensing



Powergen
Wind

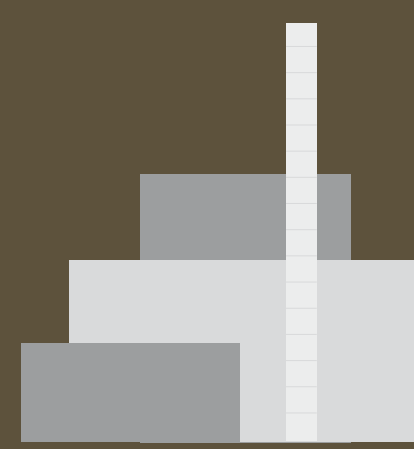


Powergen
Biomass / Peat

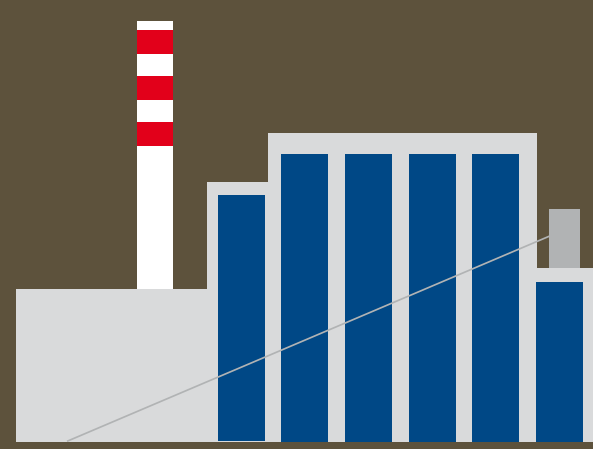
Harvesting the wind, securing the future

BORD NA MÓNA

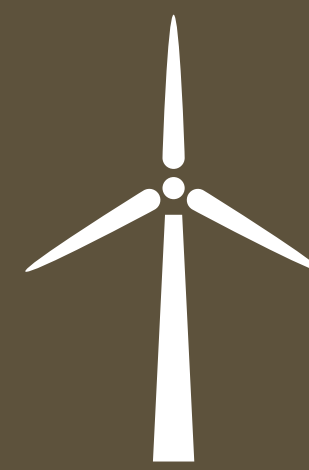
POWERGEN



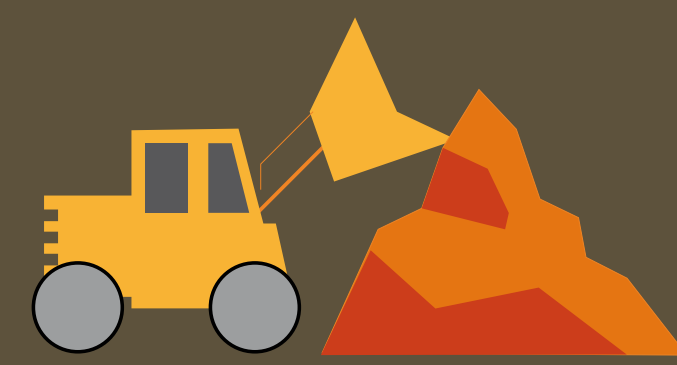
Powergen
Peaking



Powergen
Condensing



Powergen
Wind



Powergen
Biomass / Peat