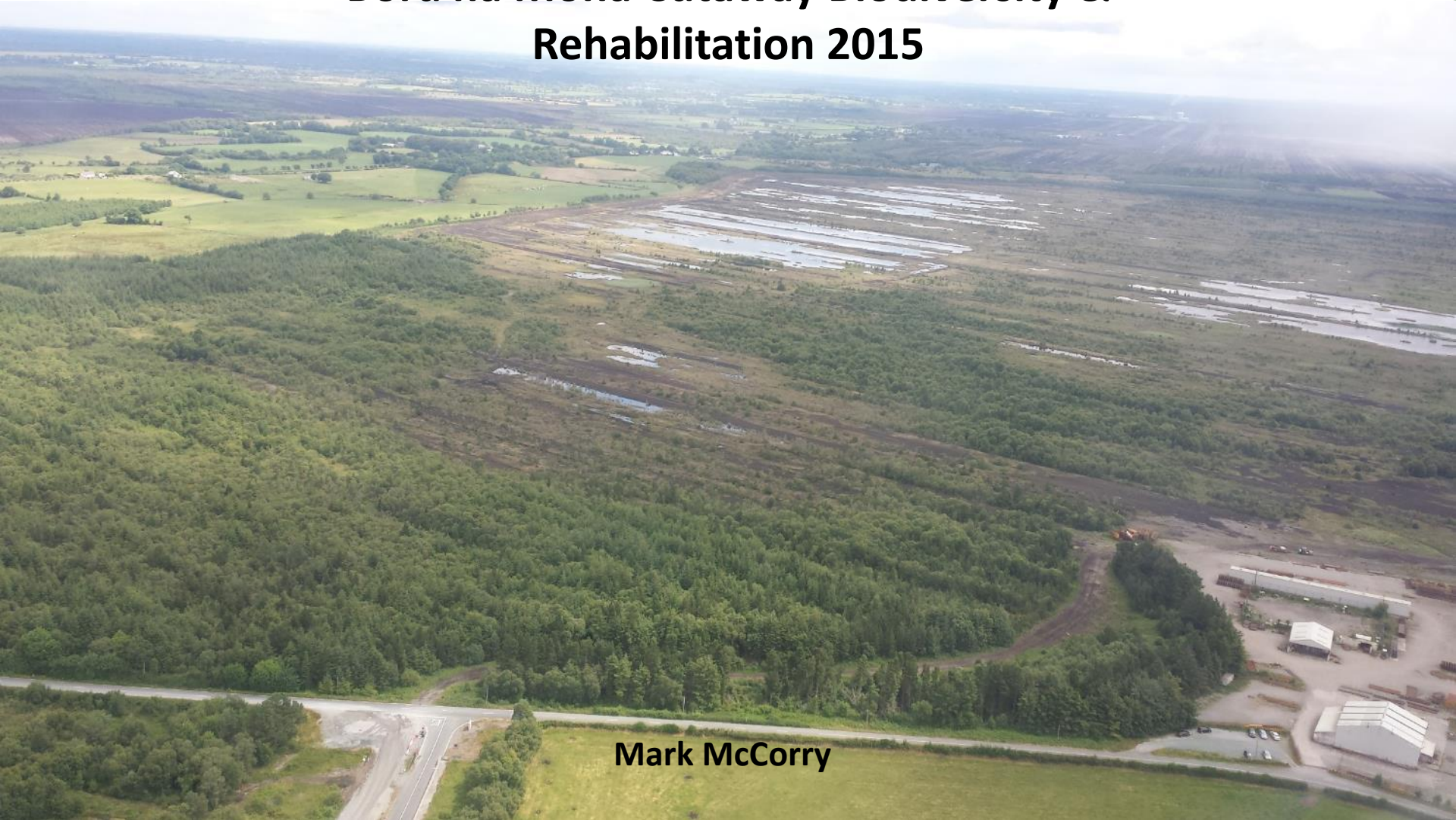


Bord na Móna Cutaway Biodiversity & Rehabilitation 2015

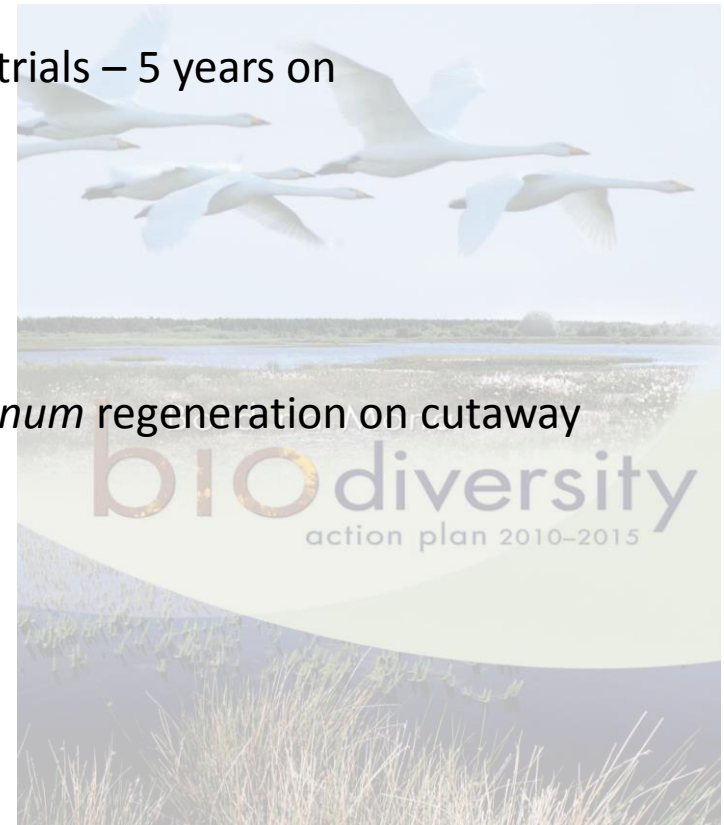


Mark McCorry



Outline

- Cutaway rehabilitation – key messages
- Drumman targeted management rehabilitation trials – 5 years on
- Rathvilla quarry rehabilitation Jan 2015
- Cavemount rehabilitation 2015
- Kilberry *Sphagnum* establishment trials – *Sphagnum* regeneration on cutaway
- Cloncannon Bog ecotope map
- Biodiversity on the cutaway



Cutaway Rehabilitation =

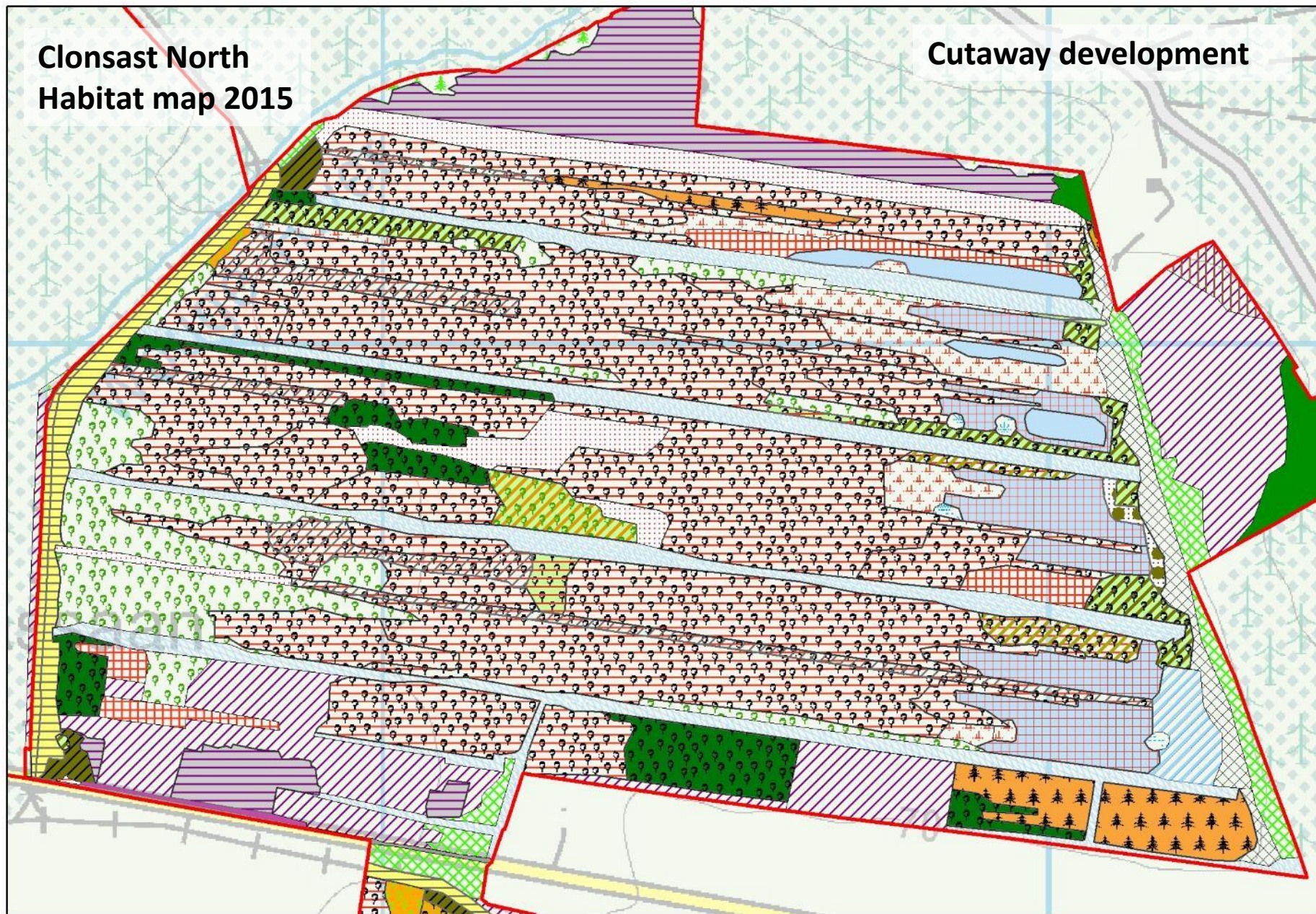
General criteria defining successful rehabilitation (milled cutaway scenario)

- Environmental stabilisation of bare peat areas, largely through enhancing natural colonisation
 - targeted management
 - active re-wetting (drain-blocking)
- Mitigation of silt run-off via re-vegetation and wetlands development
- Development of secondary habitats appropriate to environmental conditions of the site
- Overall strategy is to **re-wet where possible**
 - Need to consider site conditions, neighbours etc
 - also consider after-use

- **Rehabilitation not the same as after-use and development - but linked**
- Rehabilitation about environmental stabilisation of the former peat production areas
- Future after-use is
 - Windfarm development, Amenity, Biodiversity, Forestry, Industrial development etc

**Clonsast North
Habitat map 2015**

Cutaway development



Drumman Rehabilitation trials

Reed Canarygrass plot,
Sept 2015



Reed Canarygrass plot,
May 2010



Drumman Rehabilitation trials

Triticale plot, Sept 2015



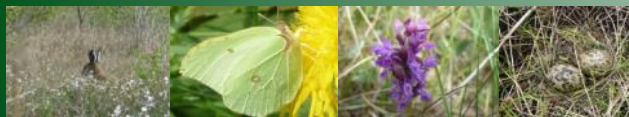
Triticale Plot, May 2010



Drumman Rehabilitation trials

Fertiliser and Lime plot,
Sept 2015

Fertiliser and Lime Plot,
May 2010

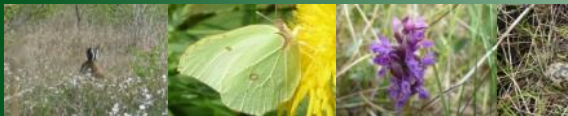


Drumman Rehabilitation trials

Fertiliser plot,
Sept 2015



Fertiliser plot, May 2010



Rathvilla quarry rehabilitation Jan 2015



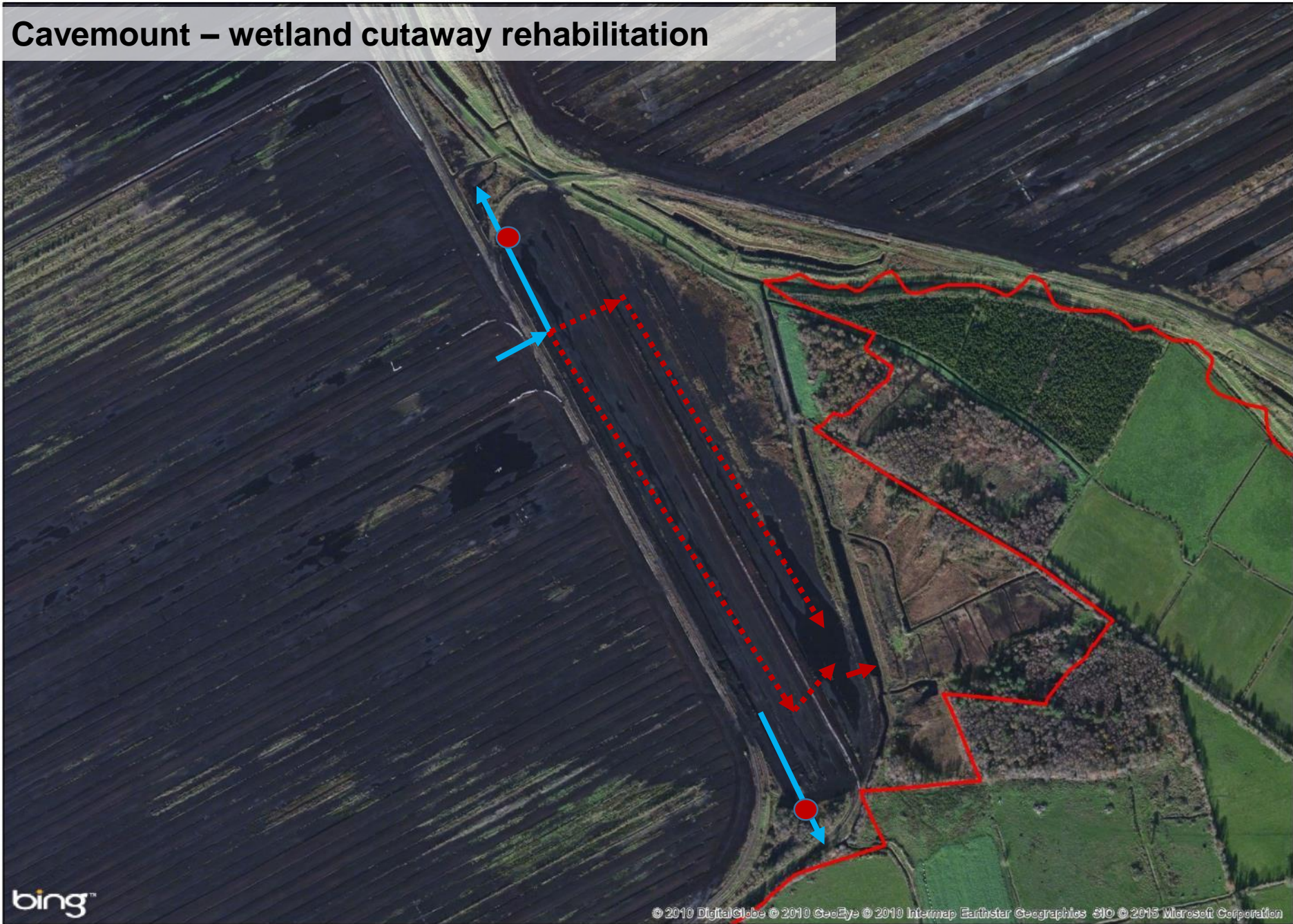


Cavemount – rehabilitation

Fertiliser
treatment

Wetland
rehabilitation

Cavemount – wetland cutaway rehabilitation



Cavemount – wetland cutaway rehabilitation



Wetland – after outfall blocking



Kilberry *Sphagnum* Establishment and Growth Trial

First trial set up 2012



Kilberry *Sphagnum* Establishment and Growth Trial

Flooding summer 2012





Sphagnum
capillifolium
plot

Kilberry *Sphagnum* Establishment and Growth Trial

Established
2012



Average *Sphagnum* cover is <1% across 2012 plots
2 plots approach 5%





Sphagnum palustre plot
Established 2013

Kilberry *Sphagnum* Establishment and Growth Trial

Average Sphagnum cover is 1-4% across 2013 plots



Sphagnum palustre plot
July 2015 - *Sphagnum* cover 20%



Kilberry *Sphagnum* Establishment and Growth Trial



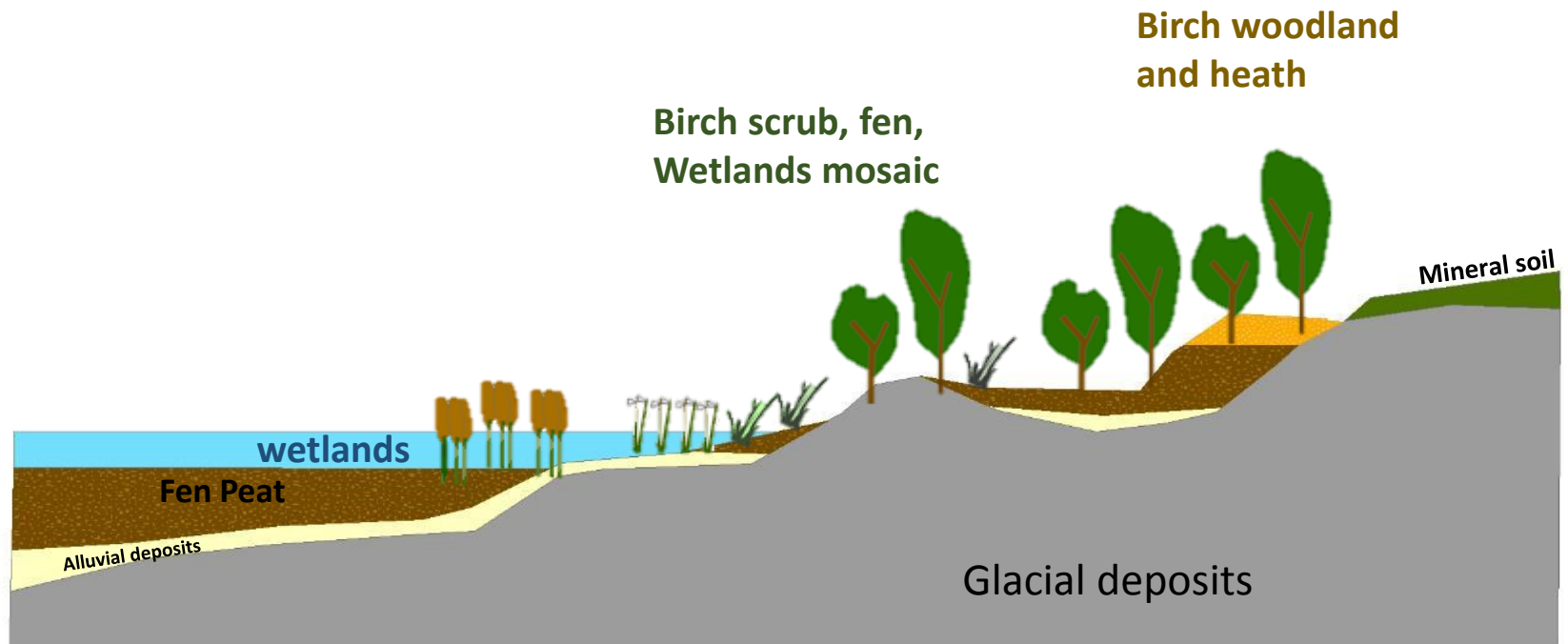
General site condition
July 2015



Ballivor bog – excellent natural *Sphagnum* regeneration in places



Secondary cutaway habitats



Sphagnum-rich community
embryonic raised bog communities?

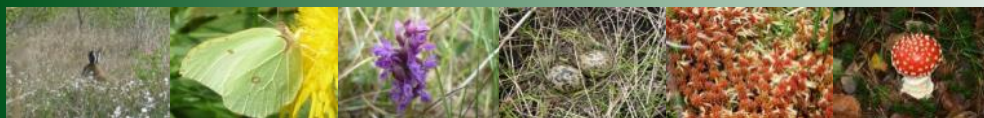


Cloncannon Bog





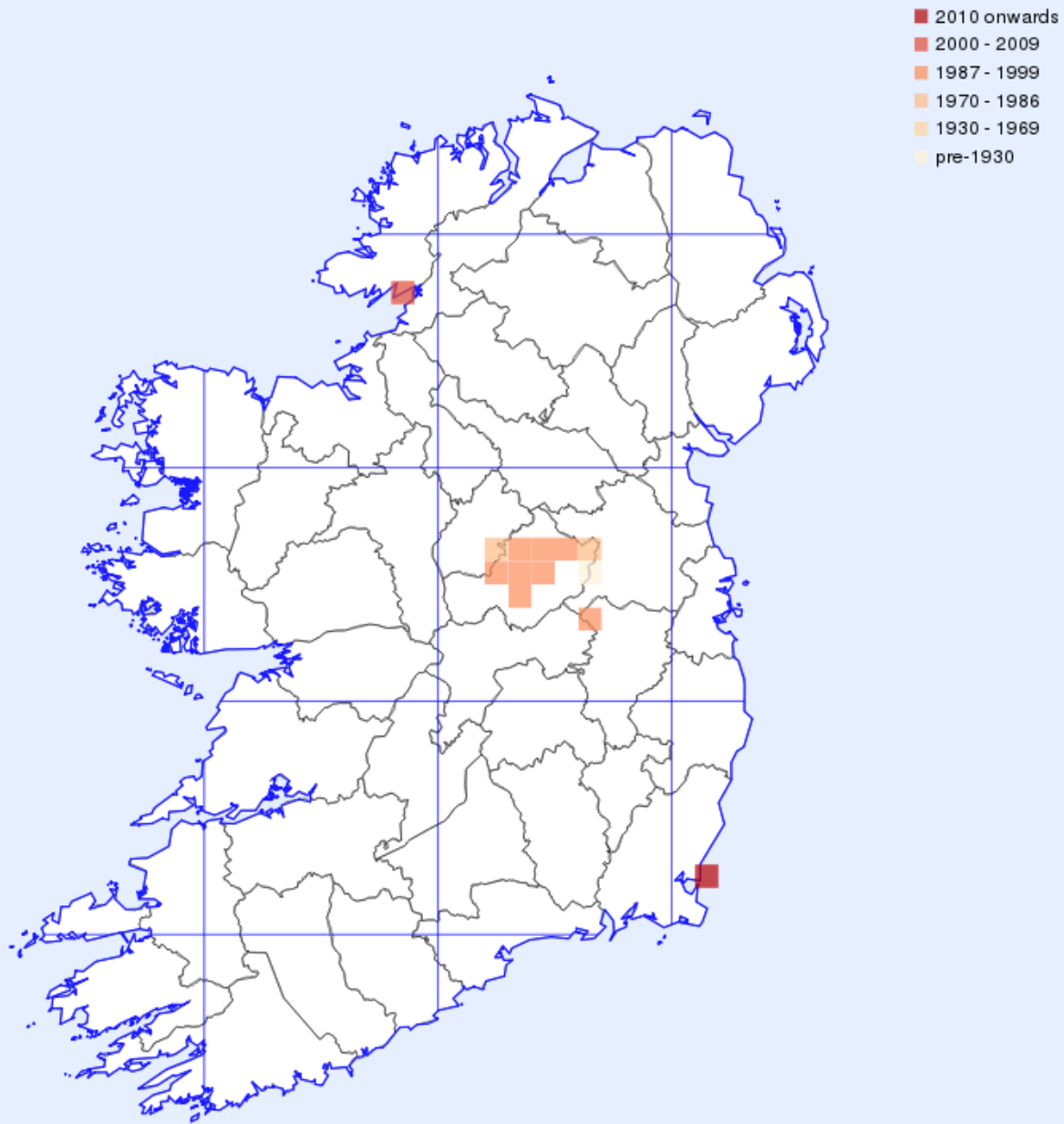
Marsh Fritillary butterfly
Annex II – status vulnerable



Carrickhill bog - cutaway



Round-leaved Wintergreen *Pyrola rotundifolia*



© BSBI 2015



Key messages

- Natural colonisation + targeted rehabilitation of cutaway
= environmental stabilisation & ***sites with biodiversity value***
- Rehabilitation can provide space/opportunities for biodiversity
+ space that can be used for other **after-uses**



Thank-you

