

2nd Biodiversity Action Plan 2016-2021

Restoration & Rehabilitation Trials

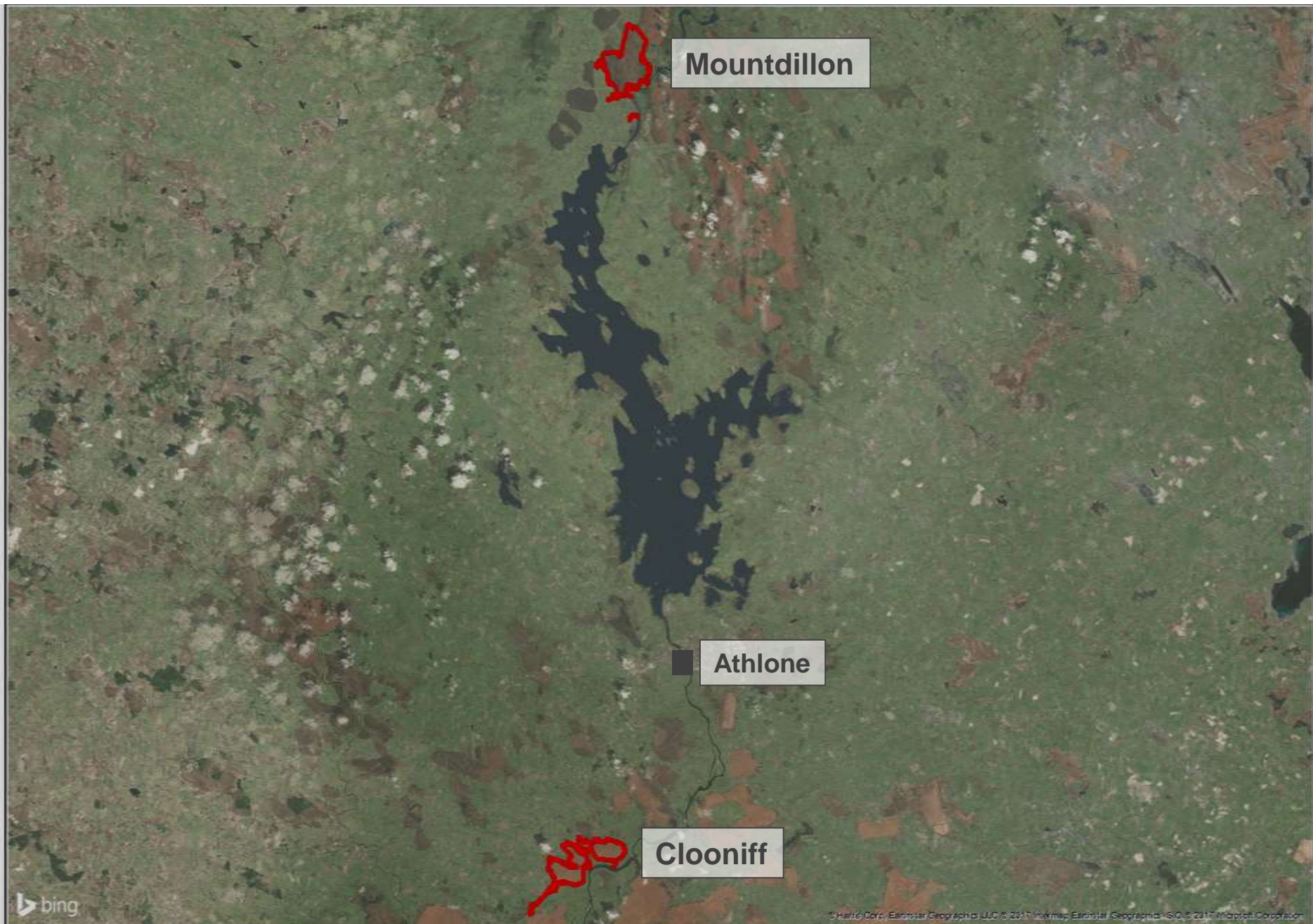
Barry O'Loughlin

2nd February 2017





Overview

- **Wetland Rehabilitation Trials**
 - Mountdillon Wetland & Clooniff
- **Green Hay Trials**
 - Kilmacshane Bog
- **Raised Bog Restoration**
 - Bracklin Bog
- **Other Project Updates**
 - Cavemount Fertiliser Trials and Cornaveagh Ecotope Mapping



Legend

-  Rehab Boundary
-  Site Boundary

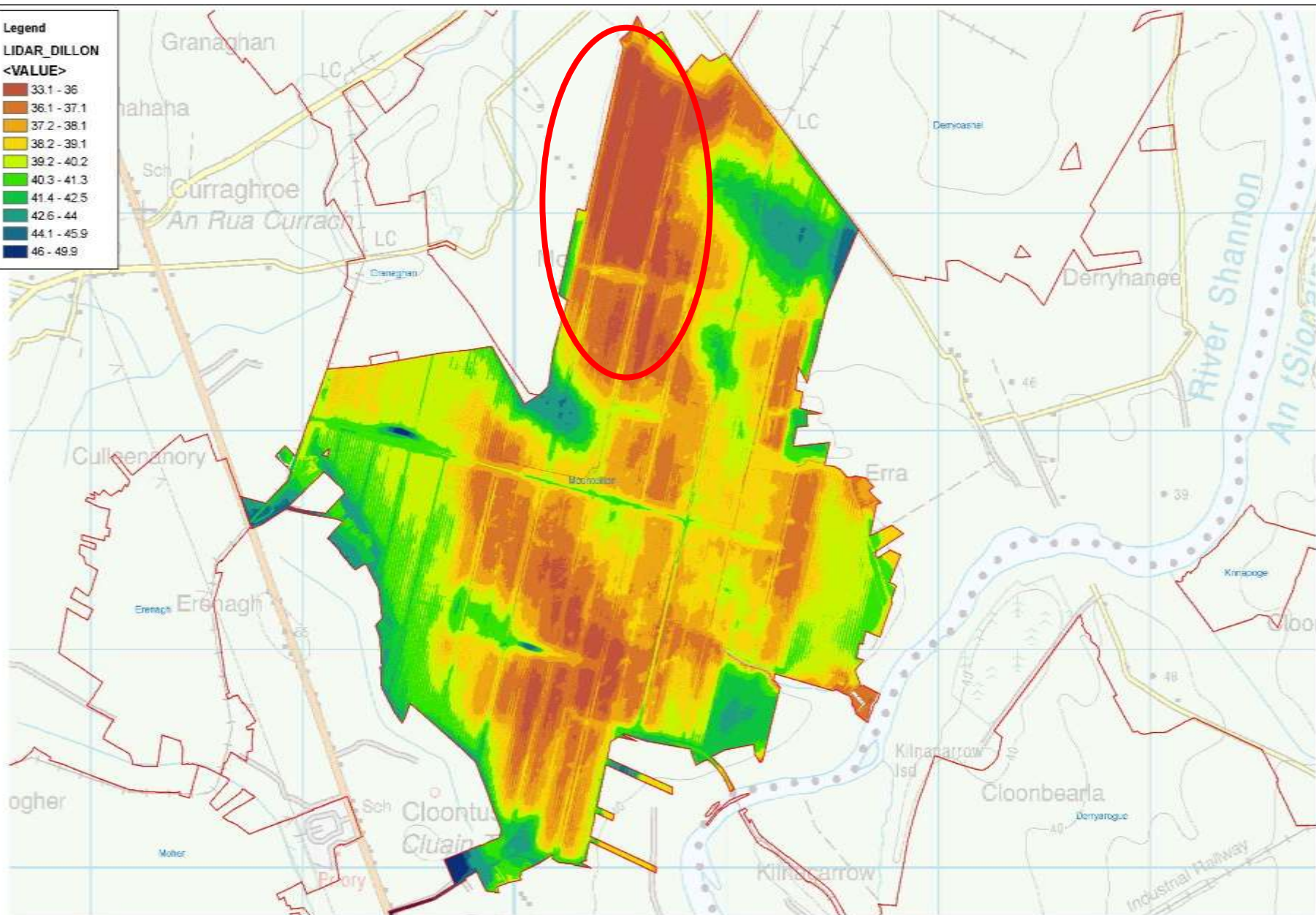
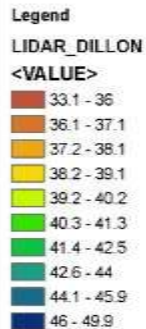
Mountdillon Bog

Rehab Area: 63 ha

Pumps

Mount Dillon Wetland Rehabilitation:

- 63ha
- Landscaping and profiling of Berms
- Some pumps turned off in November 2016



Mount Dillon Bog





Legend

-  Rehab Boundary
-  Site Boundary

Clooniff Rehab Trial (November 2016):

- 1.5 ha
- Water enters production area to the west
- Ongoing monitoring of water levels and site development

**Clooniff
Rehab Area: 1.5 ha**

Berm

Reed Plants

Drainage Channel

Berm





Kilmacshane Green Hay Trial

Kilmacshane Bog (Co. Galway)

- Seed sourced from Donor Site (Shannon Callows)
- Hay Bales
- Hand spread over two trial plots on peat fields (0.7ha) (early September 2016)
- Revisit (Late October 2016)





Clonmacnoise

Hay Meadow
(Shannon Callows)

Kilmacshane Bog
(Trial Crop)

Banagher



Late October 2016



Late October 2016



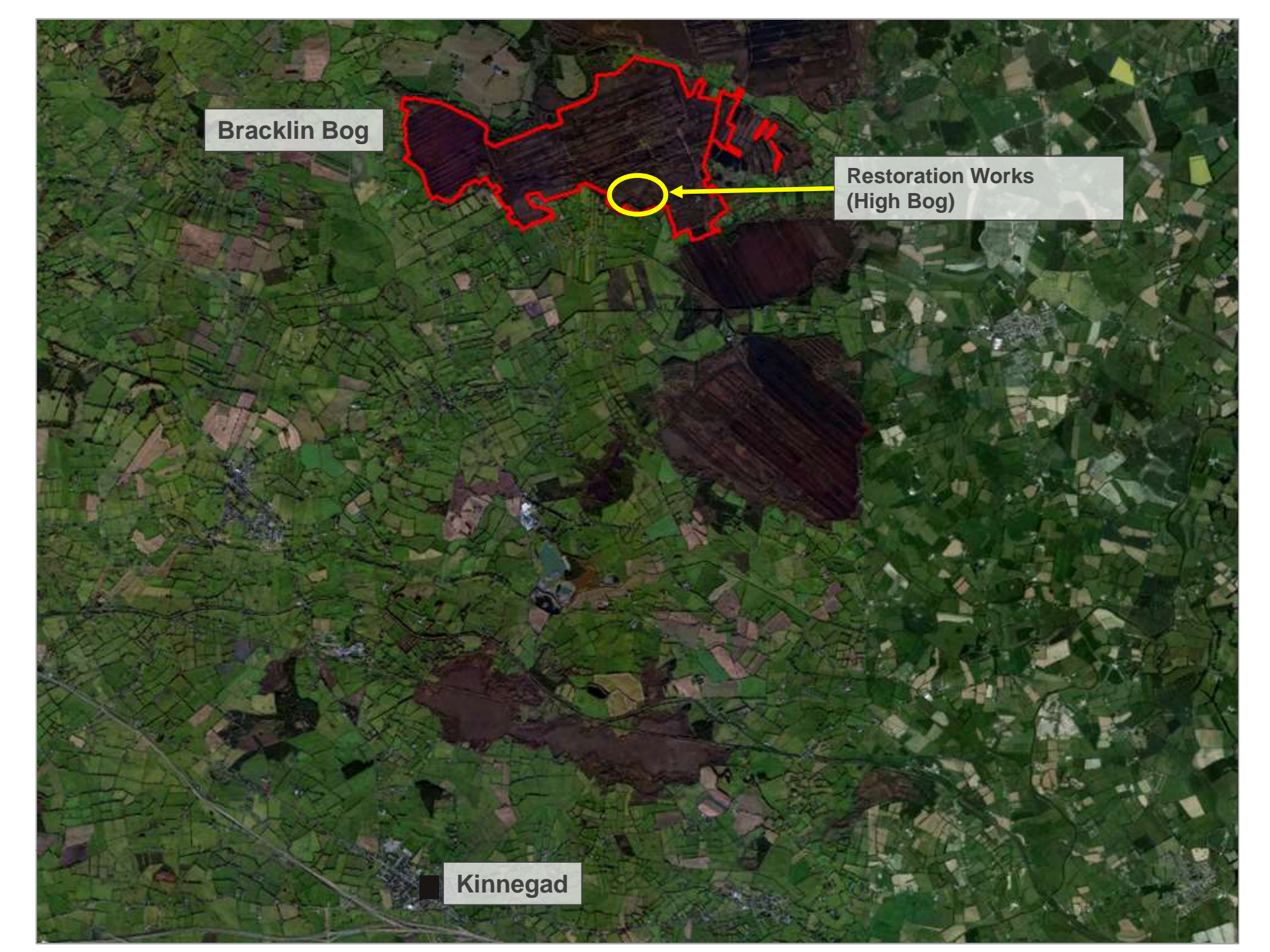
Bracklin Bog - Raised Bog Restoration

- Bracklin Bog (Ballivor Bog Group)

Two main objectives:

1. Re-wet the high bog by raising and stabilising the water table near the bog surface through drain blocking measures; and
2. Re-establish and enhance peat forming indicator species notably *Sphagnum* mosses on the high bog





Bracklin Bog

Restoration Works
(High Bog)

Kinnegad

Legend

 Bracklin High Bog Boundary

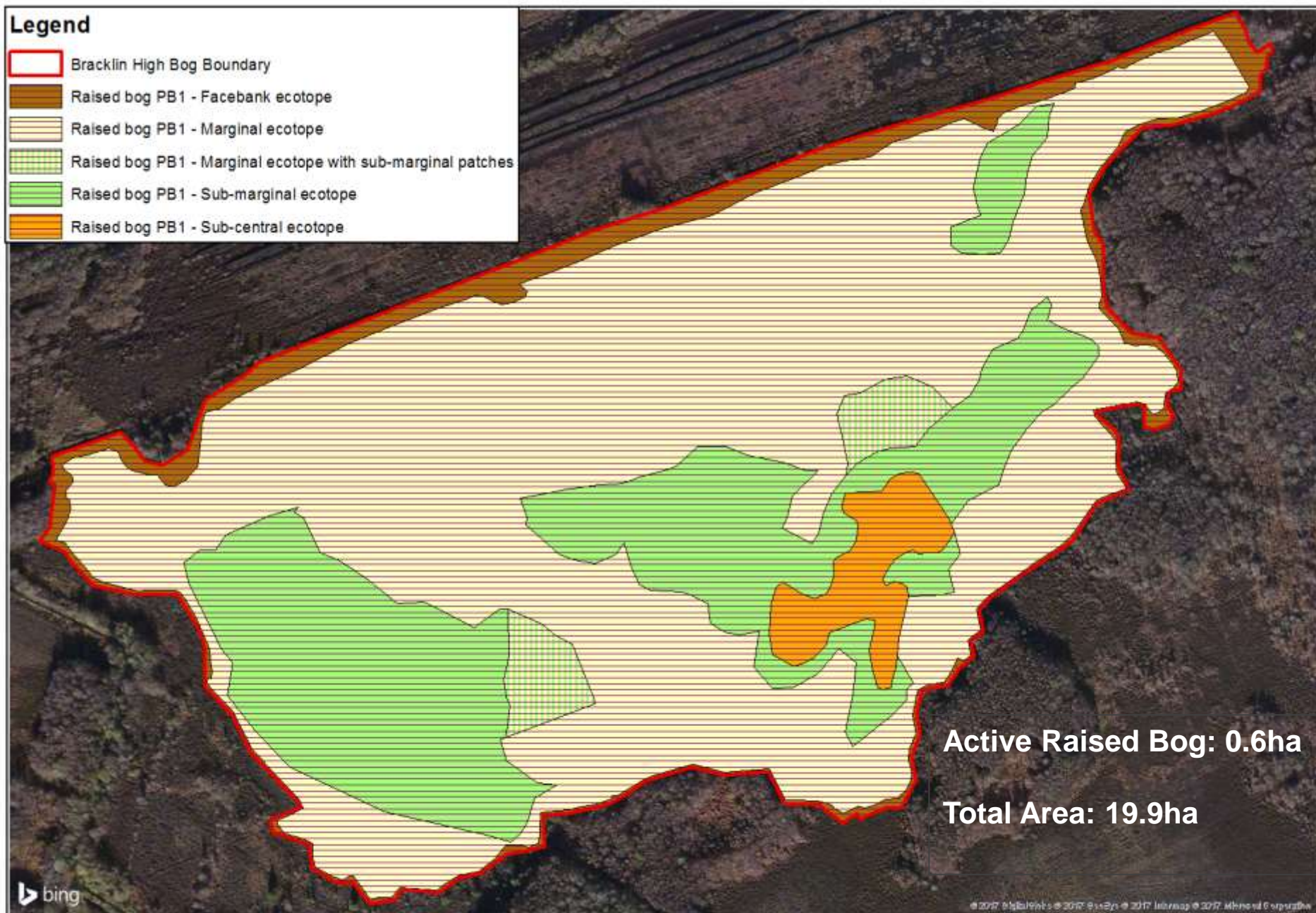


bing

© 2017 DigitalGlobe © 2017 GeoEye © 2017 Intermap © 2017 Microsoft Corporation

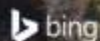
Legend

- Bracklin High Bog Boundary
- Raised bog PB1 - Facebank ecotope
- Raised bog PB1 - Marginal ecotope
- Raised bog PB1 - Marginal ecotope with sub-marginal patches
- Raised bog PB1 - Sub-marginal ecotope
- Raised bog PB1 - Sub-central ecotope

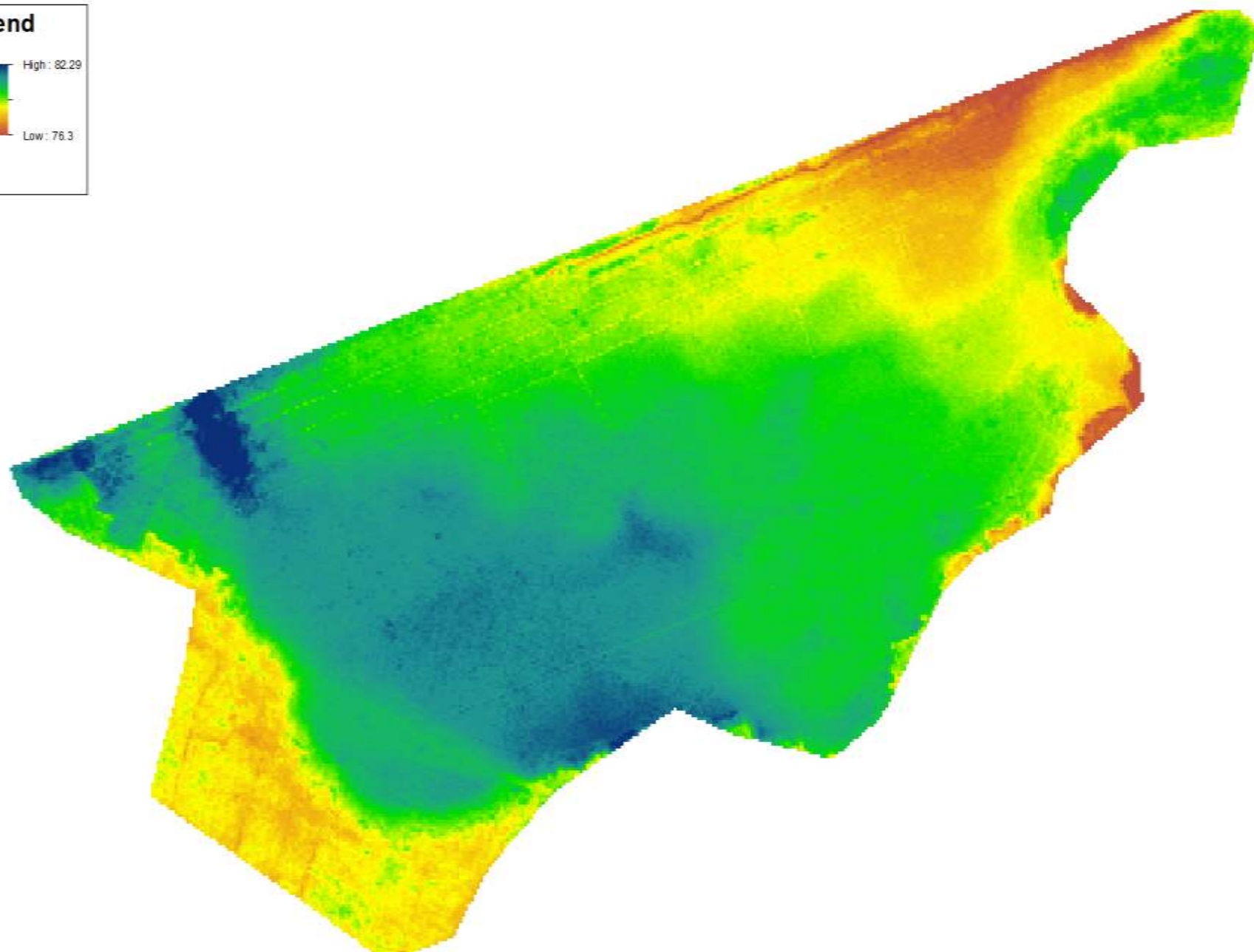
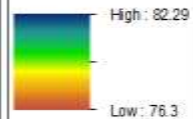


Active Raised Bog: 0.6ha

Total Area: 19.9ha



Legend



Legend

- Peat Dams
- Bracklin High Bog Boundary





Cavemount Fertiliser Trials



Cavemount

Rehabilitation trial

**Granulated rock-phosphate
applied 2015**

47 ha treated



August 2015



Cavemount

Rehabilitation trial

**Granulated rock-phosphate
applied 2015 on Peat Field**

47 ha treated

September 2016



September 2016
No application



Cavemount

Rehabilitation trial

Granulated rock-phosphate
applied 2015

Headland

September 2016
After Application



Cornaveagh Baseline Survey

Legend

 BnM_High_Bog_Boundary



© 2017 DigitalGlobe, © 2017 GeoEye, © 2017 IntraMap, Earthstar Geographics, CNR, © 2017 Microsoft Corporation



Active Raised Bog: 0.54ha

Total Area: 21.9ha

Legend

- BnM_High_Bog_Boundary
- Bog woodland (WN7)
- Scrub (WS1)
- Raised bog PB1 - Facebank ecotope
- Raised bog PB1 - Marginal ecotope
- Raised bog PB1 - Marginal ecotope with sub-marginal patches
- Raised bog PB1 - Sub-central ecotope















Thank You